



Product Range



SAME

A HISTORY OF FUTURE VISION.

When is the perfect time to breathe life into a dream? The answer to this question is written in the history of a company that has turned its aspirations into reality. A company founded in 1942. With Europe in the midst of the Second World War, and with still no signs of peace in sight, two brothers decided to follow their instincts and invest in a forward-looking idea. The vision of the brothers Eugenio and Francesco Cassani took shape in a company they named SAME - Società Accomandita Motori Endotermici. Founded on courage, a spirit of adventure and engineering prowess, SAME has innovated, invented and manufactured excellence in agricultural machinery. The company has pursued a clearly defined mission since its inception. Right from the start, the Cassani brothers dedicated their efforts to the design and development of solutions to

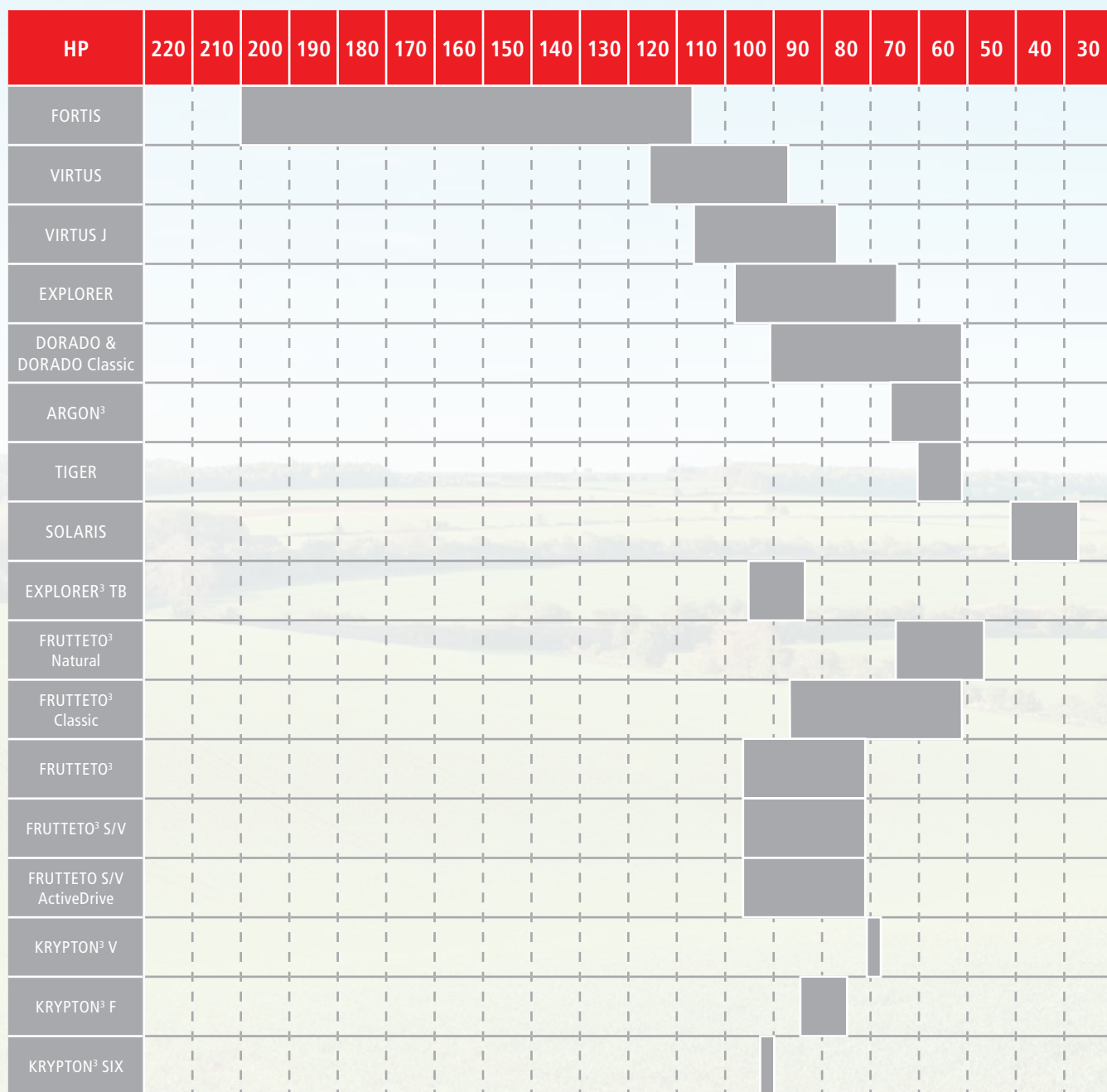
make the farmer's job easier. When it was introduced in 1952, the first four wheel drive diesel tractor ushered in a genuine revolution in agricultural machinery. The intuitive genius of the two brothers began reaping rewards, and the company grew from strength to strength to evolve into the success story it is today. We add new chapters to this story every single day, with the advances in technology evident in our tractors. Increasingly more efficient engines, cab interiors that are more comfortable than ever before and dedicated technological features - all of which is geared to increasing the productivity and effectiveness of our machines. This is what we aspire to - this is our mission: to lead farmers towards a future that we write together.

TABLE OF CONTENTS

OPEN FIELD	6 - 7
OPEN FIELD & UTILITY	8 - 15
MINI	16
SPECIALISTS	17 - 23
CRAWLERS	24 - 25
OPEN FIELD CRAWLERS	26
FRONT LOADERS	27

A COMPLETE RANGE.





FORTIS



Specific armrest and transmission for "Standard" models with manual gearbox.



Specific armrest for "INFINITY" models with semi-automatic shift system.



OUTSTANDING IN ALL TERRAIN CONDITIONS.

Combining fuel efficiency with impressive performance, Fortis ushers in the next generation of mid-high power tractors with a unique personality, extraordinary capabilities and unrivalled versatility.

These tractors are the result of a continuous progression of experience, research, tradition and technology between the different products in the SAME range. You can see the results for yourself: aggressive lines, breathtaking curves, LED tail lights, innovative materials and extraordinary appeal. Even what is not visible to the eye you can "feel" as soon as you start the tractor: Deutz TCD Tier4i engine with SCR exhaust after-treatment system, manual or semi-automatic transmission with a top speed of 50 km/h (40 km/h at engine economy speed), APS (Automatic Powershift), ASM (Axle System Management), PowerShuttle for working at

any speed in both directions, and electronic lift with radar for controlling all implements with absolute precision. These are just some of the features making Fortis tractors the ideal machines for all conditions, and irreplaceable, partners for the job.

Fortis tractors are available in different configurations and versions. From the comprehensively and rationally equipped "Standard" models, to "INFINITY" variants with the latest technological features, catering for both agricultural contractors and farms. A choice of 4 or 6 cylinder 16 or 24 valve engines with DCR (Deutz Common Rail) technology lets you choose the best suited tractor for any

possible application.

The transmission of the Fortis represents a leap forward in terms of driver comfort and productivity. Three configurations are available: T7140, with 4 ranges and 4-speed Powershift for a total of 48+ 48 speeds (with supercrawler gear); T7200, with 6 manual ranges with four Powershift speeds each, for a total of 40+ 40 speeds; T7200 Cshift, with 6 semi-automatic ranges with four Powershift speeds, for a total of 40+ 40 speeds (on the T7200, the supercrawler gear is available in the four lowest ranges only).

FORTIS		120.4	130.4	140.4	140	150.4	160.4	150	160	180	190	210
Engine		Deutz	Deutz	Deutz	Deutz	Deutz	Deutz	Deutz	Deutz	Deutz	Deutz	Deutz
Emissions		Tier4i	Tier4i	Tier4i	Tier4i	Tier4i	Tier4i	Tier4i	Tier4i	Tier4i	Tier4i	Tier4i
Cylinders/ Displacement	no./cc	4/4038	4/4038	4/4038	6/6057	4/4038	4/4038	6/6057	6/6057	6/6057	6/6057	6/6057
Max. power (ECE R 120)	kW/ HP	87/118	94.3/128	99.2/135	99.2/135	112.8/153	122/166	112.8/153	122/166	129.5/176	142.3/194	154.1/210
Max. power with boost (ECE R 120)	kW/ HP	-	-	106.1/144	106.1/144	-	-	-	-	-	-	-
Power at rated engine speed with boost (ECE R 120)	kW/ HP	-	-	103.7/141	103.7/141	-	-	-	-	-	-	-
Power at rated engine speed (ECE R 120)	kW/ HP	83.9/114	91/124	95.4/130	95.4/130	104/141	115/156	104/141	115/156	123/167	135/184	154/209
Maximum rear lift- ing capacity	kg	6200	6200	6200	6200	9200	9200	9200	9200	9200	9200	9200
Wheelbase	mm	2419	2419	2419	2647	2419	2419	2647	2647	2767	2767	2767
Weight (min-max)	kg	5500- 6380	5500- 6380	5500- 6380	5620- 6500	6050- 6930	6050- 6930	5740- 6560	5870- 6750	6360- 7240	6610- 7490	6610- 7490

OPEN FIELD & UTILITY

VIRTUS and VIRTUS J



The ideal configurations for working with a front loader.



SDD (Steering Double Displacement) steering system.



A TRACTOR DESIGNED IN THE FIELD.

SAME Virtus and Virtus J: two product families letting you choose the perfect specification for any application.

In the SAME tradition, the Virtus J offer a wide choice for the best possible combination and configuration of the various features and options depending on the work to be done. Virtus J tractors offer farmers the scope to configure their tractor with a choice of different transmissions: with a 10 + 10 speed mechanical gearbox, the efficient Hi-Lo 20 + 20 speed transmission or the advanced 30 + 30 speed transmission with three Powershift speeds (for GS versions only). The cab is designed for outstanding comfort during even the longest working day, creating a pleasant working environment for the driver. With an ergonomic driving position, the high visibility roof and easily accessible functions and controls, Virtus J tractors

offer class beating comfort. With its Virtus J family, SAME offers farmers a versatile and dependable new partner in the field capable of tackling any working situation.

The perfect configuration for every task. Adaptability is the basis of evolution, just as much in technology as it is in nature. This is why Virtus tractors can be specified specifically to cater for your needs. A wide choice of implements and accessories offers livestock farmers all the tools they need to carry out their daily tasks more efficiently and effectively. Tier4i engines, the "Energy Saving" hydraulic system and a 50 km/h transmission (with speed limited electronically to 40 km/h at engine economy

speed) help cut operating costs significantly. Farming contractors have the specification options to configure these tractors exactly their individual requirements and maximise productivity: with an extraordinarily flexible engine and the 60 + 60 Powershift transmission, which ensures the ideal speed ratio in all conditions and for any task. Virtus tractors also offer the ideal machine for medium to large farms, combining impressive versatility with outstanding productivity: with an electronically controlled hydraulic lift, 4-speed PTO and automatic 4-wheel drive and differential lock management system letting you work quickly, efficiently and comfortably.

VIRTUS		100	110	120	130	J 90	J 100	J 110	J 120
Engine		Deutz	Deutz	Deutz	Deutz	Deutz	Deutz	Deutz	Deutz
Emissions		Tier4i	Tier4i	Tier4i	Tier4i	Tier4i	Tier4i	Tier4i	Tier4i
Cylinders/Displacement	no./cc	4/3620	4/3620	4/3620	4/3620	4/3620	4/3620	4/3620	4/3620
Max. power (ECE R 120)	kW/HP	72.5/99	81/110	87/118	93/127	65.5/89	72.5/99	81/110	87/118
Power at rated engine speed (ECE R 120)	kW/HP	69.5/95	77/105	83/113	88/120	62.5/85	69.5/95	77/105	83/113
Maximum rear lift capacity	kg	6600	6600	6600	6600	4855	4855	5410	5410
Wheelbase (4WD/2WD)	mm	2430	2430/2390	2440	2440	2370/2330	2370	2370/2330	2370/2330
Weight	kg	5050	5050	5600	5600	4300	4400	4400	4400

EXPLORER



*Ergonomic
driving position
and new
passenger seat.*



*Stop&Go
function control.*



DIFFERENT WORKING CONDITIONS, JUST ONE TRACTOR.

Boasting extraordinary flexibility to adapt to any task, Explorer tractors offer not only class-beating performance, but also unrivalled versatility in the field.

The Explorer tractor family lets you choose exactly the right configuration and version you need. The imposing dimensions of Explorer HD models and the outstanding weight/power ratio of Explorer MD and LD tractors are perfectly tailored for working in a wide range of soil engaging conditions while minimising compaction. The Explorer range offers a huge choice of models and versions. LD - 3 models from 80 to 100 HP, which are compact, easy to operate and ideal for general farm tasks and secondary tillage usage. MD - 5 models from 90 to 115 HP with a wide variety of specifications, dimensions and weight. These models are predominantly for general purpose farming. HD - 3 models from 90 to 115 HP for more demanding open field tasks. All the models in the Explorer family are powered by 3 or 4 cylinder FARMotion

engines compliant with Tier4i regulations. A wide choice of transmission options are offered, with a mechanical 4 or 5 speed gearbox and Hi-Lo Powershift or 3-speed Powershift, to allow the to driver maintain the ideal speed for any job. The option of a hydraulic reverse shuttle with integrated response setting control, the Stop&Go function and hydraulic system with a delivery rate of 60 l/min at lower engine speed (60ECO) makes Explorer tractors extremely effective when working with a wide variety of implements or operating a front loader. Explorer tractors are a pleasure to drive in the field while the mechanical or electronic rear lift is extremely easy to use, maximising productivity at all times. Many of the implements used to prepare the soil for drilling have very high PTO power demands, calling for an engine capable of

delivering high performance in all conditions. Offered with a choice of 2 or 4 speed PTO, a ground speed PTO synchronised with the transmission and with an independent output shaft, and a 1000 rpm front PTO, to provide the ideal power selection for any PTO driven implement, Explorer tractors are multi-purpose machines capable of catering for a wide range of applications. Explorer tractors combine unparalleled flexibility with superior productivity to offer the ideal answer to the needs of the agricultural professional. The functional and comfortable cab offers the driver a pleasant working environment. User-friendly controls, with functional control groups arranged by colour, and superior comfort means that the operator can immediately feel at home in the cab and work in harmony with the machine right from the very first hours in the seat.



EXPLORER		90.4 HD	105.4 HD	115.4 HD	90 MD	90.4 MD	100 MD	105.4 MD	115.4 MD	80 LD	90 LD	100 LD
Engine		FARMotion	FARMotion	FARMotion	FARMotion	FARMotion	FARMotion	FARMotion	FARMotion	FARMotion	FARMotion	FARMotion
Emissions		Tier4i	Tier4i	Tier4i	Tier4i	Tier4i	Tier4i	Tier4i	Tier4i	Tier4i	Tier4i	Tier4i
Cylinders/ Displacement	no./ cc	4/3849	4/3849	4/3849	3/2887	4/3849	3/2887	4/3849	4/3849	3/2887	3/2887	3/2887
Max. power (ECE R 120)	kW/ HP	65/88	75/102	80/109	65/88	65/88	71/97	75/102	80/109	55.4/75	65/88	71/97
Power at rated engine speed (ECE R 120)	kW/ HP	61.6/84	71.1/97	75.8/103	61.6/84	61.6/84	67.3/92	71.1/97	75.8/103	55.4/75	61.6/84	67.3/92
Maximum rear lifting capacity	kg	4800	4800	5400	4500	4500	4500	4500	4500	4500	4500	4500
Wheelbase (4WD/2WD)	mm	2400/2360	2400/2360	2400/2360	2300	2400	2300	2400	2400/2360	2300/2260	2300/2260	2300/2260
Weight	kg	4200	4200	4300	3750	3900	3750	3900	3900	3600	3600	3600

OPEN FIELD & UTILITY

DORADO and DORADO Classic



*Controls
integrated
in right hand
console.*



*Hydraulic reverse
shuttle with
SenseClutch.*



A LOYAL ALLY IN THE FIELD, DAY AFTER DAY.

Agility, flexibility, quality: Dorado is the ideal answer to the needs of the working day, delivering superior performance without compromising comfort.

Versatile manoeuvrability, smooth directional changes and minimised soil compaction are key factors for efficient time management and ensuring the highest possible crop quality. Boasting an impressive power to weight ratio, Dorado and Dorado Classic tractors cater for every possible situation. The driving force of these tractors comes from a choice of two different power units: new 3 or 4 cylinder Tier4i FARMotion engines or tried and tested 1000 Series Tier3 engines. All of these engines offer generous torque reserves and outstanding flexibility, making them capable of tackling sudden increases in load even at low engine speeds. The range consists of a wide choice of models: Dorado 70-80-85 (Tier3), Dorado Classic 60-70-80-85 (Tier3), Dorado 90-90.4-100.4 (Tier4i) and Dorado Classic 90-90.4 (Tier4i). On top of these are the Dorado 85-90-90.4 and Dorado Classic 85-90-90.4, which are available as both 2WD and 4WD versions. The many unique attributes of these tractors have contributed to making the daily job of the farmer easier, quicker and more productive. The more comfortable the driver seat, the better you work. The

soundproofed, pressurised cab offers the driver a comfortable and ergonomic environment. To let the driver focus on the job in hand with minimal distraction, all controls are within easy reach and logically organised on the right hand side. The high visibility roof, for applications with the front loader, offers an unobstructed view of the loader attachment. Whilst the completely mechanical transmission with 10 FWD + 10 REV speeds (Classic models only) or 30 FWD + 15 REV speeds with underdrive and supercreeper gear is the logical choice for straightforward efficiency, the 45 + 45 transmission with 3-speed Powershift for Dorado models (LS-GS) ensures simple and effective shuttle manoeuvres. The more technologically advanced versions (GS) are also available with hydraulic reverse shuttle, with 2 Long Life multi-plate wet clutches (for greater durability and reliability), SenseClutch and a dedicated electronic control unit controlling directional change with no interruption in drive. For higher driving speeds and impeccable comfort, the Overspeed gearbox offers a choice of ideally spaced gear ratios and a top

speed of 50 km/h, or an electronically limited top speed of 40 km/h at engine economy speed. All Dorado tractors are offered with up to 3 PTO speeds (with multi-plate wet clutch for Dorado models and a dry clutch for Dorado Classic versions) and a ground speed PTO to cater for every possible need. Many of the implements used today have high hydraulic power demands. The main hydraulic system of Dorado tractors is supplied by an independent pump - with a delivery rate of 42 l/min for Dorado Classic models or 54 l/min for Dorado models - and equipped with 2/3 auxiliary valves. Lifting capacity varies from 2650 kg to 3600 kg, depending on the model and version. The rear lift is also available with electronic control. Whatever the terrain or road conditions, a simple touch of the foot on the pedal ensures total control of the braking system with hydraulically operated wet discs on all four wheels.

DORADO		60 Classic	70 Classic	70	80 Classic	80	85 Classic	85	90 Classic	90	90.4 Classic	90.4	100.4
Engine		SDF	SDF	SDF	SDF	SDF	SDF	SDF	FARMotion	FARMotion	FARMotion	FARMotion	FARMotion
Emissions		Tier3	Tier3	Tier3	Tier3	Tier3	Tier3	Tier3	Tier4i	Tier4i	Tier4i	Tier4i	Tier4i
Cylinders/Displacement	no./cc	3/3000	3/3000	3/3000	3/3000	3/3000	4/4000	4/4000	3/2887	3/2887	4/3849	4/3849	4/3849
Max. power (ECE R 120)	kW/HP	46.5/62	53/72	53/72	60.3/82	60.3/82	62.5/85	62.5/85	65/88	65/88	65/88	65/88	75/102
Power at rated engine speed (ECE R 120)	kW/HP	46.5/62	53/72	53/72	53/72	53/72	55/75	55/75	61.6/84	61.6/84	61.6/84	61.6/84	71.1/97
Maximum rear lifting capacity	kg	3600	3600	3600	3600	3600	3600	3600	3600	3600	3600	3600	3600
Wheelbase (4WD/2WD)	mm	2100	2100	2100	2100	2100	2230/2270	2230/2270	2100/2140	2100/2140	2230/2270	2100/2140	2230/2270
Weight	kg	3200	3200	3200	3200	3200	3300	3300	3200	3200	3300	3300	3300

ARGON³



- Liquid cooled 3 or 4 cylinder SDF Tier3 engines with straightforward turbo or turbo intercooler forced induction.
- 15 FWD + 15 REV transmission with synchronised mechanical reverse shuttle.
- Rear epicyclic planetary reduction final drives.
- 2-speed PTO (540/540ECO) and ground speed PTO.
- Heavy duty rear axle.
- Hydraulic braking to all four wheels.
- Hydrostatic steering with independent pump.
- Single piece, high opening front hood.

ARGON ³		65	75	80
Engine		SDF	SDF	SDF
Emissions		Tier3	Tier3	Tier3
Cylinders/Displacement	no./cc	3/3000	3/3000	4/4000
Max. power (ECE R 120)	kW/HP	46.5/62	54/72	55/75
Power at rated engine speed (ECE R 120)	kW/HP	46.5/62	54/72	55/75
Maximum rear lifting capacity	kg	2500	2500	3600
Wheelbase	mm	1976	1976	2015
Weight (min-max)	kg	2552-2800	2552-2800	1657-2900

Comfortable and ergonomic driver area.



TIGER

- 3 cylinder SDF Tier3 engines with straightforward turbo or turbo intercooler forced induction.
- 12 FWD + 3 REV synchronised transmission.
- 2-speed PTO (540/540ECO).
- Hydraulic braking to all four wheels.
- Compact size and height.
- Platform with folding ROPS.
- 2WD version available.
- Single piece, high opening front hood.

*Simple
and conveniently
located
controls.*



TIGER		65	75
Engine		SDF	SDF
Emissions		Tier3	Tier3
Cylinders/Displacement	no./cc	3/3000	3/3000
Max. power (ECE R 120)	kW/HP	46.5/62	54/72
Power at rated engine speed (ECE R 120)	kW/HP	46.5/62	54/72
Maximum rear lifting capacity	kg	2500	2500
Wheelbase (4WD/2WD)	mm	1975/2037	1975/2037
Weight (min-max)	kg	2552-2800	2658-2800

SOLARIS

- The new design with single piece hood expresses the hallmark elegance of the SAME brand.
- 4-cylinder liquid cooled Mitsubishi Tier3 naturally aspirated or turbo engines.
- Synchronised transmission: 12 FWD + 12 REV speeds with underdrive and synchronised reverse shuttle or 16 FWD + 16 REV speeds with supercreeper gear, top speed 30 km/h.
- Independent hydraulic steering circuit.
- Independent hydraulic circuit with 30 l/min pump for rear lift, and up to 3 auxiliary valves.
- Rear PTO with standard speeds of 540/540ECO or 540/1000, ground speed PTO and mid-mounted PTO.
- Front axle with outstanding steering angle (57°) and good turning characteristics.
- Electrohydraulic front and rear differential lock.
- Front hitch with 600 kg lift capacity and 1000 rpm independent PTO.

SOLARIS		35	45	55
Engine		MITSUBISHI	MITSUBISHI	MITSUBISHI
Emissions		Tier3	Tier3	Tier3
Cylinders/Displacement	no./cc	4/1500	4/1500	4/1758
Max. power (ECE R 120)	kW/HP	28.5/39	31.5/43	37/51
Power at rated engine speed (ECE R 120)	kW/HP	28.5/39	31.5/43	37/51
Maximum rear lifting capacity	kg	1200	1200	1200
Wheelbase	mm	1745	1745	1745
Weight with ROPS (min-max)	kg	1130-1340	1207-1380	1267-1440
Weight with cab (min-max)	kg	1410-1620	1487-1660	1547-1720

Cab version and air conditioning also available.



EXPLORER³ TB

- 4-cylinder turbo intercooled SDF Tier3 engines with electronic engine governor and viscstatic fan (for TB 105 model).
- Available as LS and GS versions. GS version equipped with Powershift, hydraulic reverse shuttle and Stop&Go system.
- Mechanical transmission: 10 FWD + 10 REV speeds with supercreeper gear or 40 FWD + 40 REV speeds with Hi-Lo (2-speed Powershift).
- Open centre circuit with 56 l/min pump and up to 3 auxiliary valves.
- Rear PTO with 540/540ECO/1000/1000ECO speeds and independent ground speed PTO.
- 4-wheel braking with separate brake valve for braking front and rear axles independently.
- Electrohydraulically engaged 4WD, PTO, and differential locks.
- Electronically controlled rear hitch with maximum lift capacity of 4500 kg.

EXPLORER ³ TB		95	105
Engine		SDF	SDF
Emissions		Tier3	Tier3
Cylinders/Displacement	no./cc	4/4000	4/4000
Max. power (ECE R 120)	kW/HP	70/95	78/106
Power at rated engine speed (ECE R 120)	kW/HP	70/95	75/102
Maximum rear lifting capacity	kg	4500	4500
Wheelbase (4WD/2WD)	mm	2400	2400
Weight	kg	3200	3400

Hydraulic reverse shuttle and Stop&Go system.

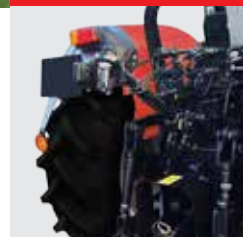


FRUTTETO³ Natural

- 3 or 4-cylinder SDF Tier3 engines with straightforward turbo or turbo intercooler forced induction.
- 15 FWD + 15 REV transmission with synchronised mechanical reverse shuttle.
- Max. speed 40 km/h.
- Rear PTO with 540/540ECO speeds and ground speed PTO.
- True 4-wheel braking system with wet disc brakes on all four wheels.
- Hydrostatic steering with independent pump.

FRUTTETO ³ Natural		55	65	75	80.4
Engine		SDF	SDF	SDF	SDF
Emissions		Tier3	Tier3	Tier3	Tier3
Cylinders/Displacement	no./cc	3/3000	3/3000	3/3000	4/4000
Max. power (ECE R 120)	kW/HP	40.5/55	45.6/62	53/72	55/75
Maximum rear lifting capacity	kg	3050	3050	3050	3050
Wheelbase	mm	1996	1996	1996	2126
Minimum width	mm	1325	1325	1325	1450
Weight (min-max)	kg	2200	2200	2200	2300

Mechanically controlled rear lift available as two versions.



FRUTTETO³ Classic

- 3 or 4-cylinder SDF Tier3 engines with straightforward turbo or turbo intercooler forced induction and electronic engine governor.
- Button operated engine speed programming function.
- 30 FWD + 15 REV synchronised transmission, maximum speed 40 km/h - also attainable at engine economy speed.
- Rear PTO with 540/540ECO/1000 speeds and ground speed PTO.
- 4-wheel braking with wet disc brakes.
- Hydrostatic steering with independent hydraulic pump.

Controls for mechanical rear lift and hydraulic auxiliary valves all at the driver's fingertips.



FRUTTETO ³ Classic		60	70	80	80.4	90	100
Engine		SDF	SDF	SDF	SDF	SDF	SDF
Emissions		Tier3	Tier3	Tier3	Tier3	Tier3	Tier3
Cylinders/Displacement	no./cc	3/3000	3/3000	3/3000	4/4000	4/4000	4/4000
Max. power (ECE R 120)	kW/HP	46/62	53/72	60/82	59/80	63/85	71/96
Maximum rear lifting capacity	kg	2600	2600	2600	2800	2800	2800
Wheelbase	mm	1990	1990	1990	2120	2120	2120
Minimum width	mm	1325	1325	1325	1450	1450	1450
Weight (min-max)	kg	2317-2500	2317-2500	2317-2500	2467-2630	2467-2650	2467-2650

FRUTTETO³

- 3 or 4-cylinder SDF Tier3 turbo intercooler engines with electronic engine governor.
- Button operated engine speed programming function.
- 5 synchronised speed gearbox with 3-speed Powershift and 3 ranges. Total 45 FWD + 45 REV speeds.
- Overspeed gearbox for a top speed of 40 km/h, also attainable at engine economy speed.
- Hydraulic reverse shuttle and Stop&Go.
- Electrohydraulically engaged 4WD, PTO and differential locks.
- Auto 4WD: automatic 4-wheel drive engagement.
- Hydraulic system with maximum flow rate of 58 l/min, hydraulic steering system with independent pump and up to 14 hydraulic distributor couplings.
- Electrohydraulic joystick for proportional control of 2 auxiliary valves.
- 3-speed PTO (540/540ECO/1000).
- Hydraulic braking to all four wheels.
- Steering angle 55°.

FRUTTETO ³		80	90	100	110
Engine		SDF	SDF	SDF	SDF
Emissions		Tier3	Tier3	Tier3	Tier3
Cylinders/Displacement	no./cc	3/3000	4/4000	4/4000	4/4000
Max. power (ECE R 120)	kW/HP	60/82	63/85	71/96	78/106
Maximum rear lift capacity	kg	2800	2800	2800	2800
Wheelbase	mm	1990	2120	2120	2120
Minimum width	mm	1454	1454	1454	1454
Weight with ROPS (min-max)	kg	2275-2630	2425-2780	2425-2780	2425-2780
Weight with cab (min-max)	kg	2495-2850	2645-3000	2645-3000	2645-3000

*Cab
with logically
laid-out controls.*



FRUTTETO³ S/V



- 3 or 4 -ylinder SDF Tier3 turbo intercooler engines with electronic engine governor.
- Available as LS and GS versions. GS version equipped with Powershift, hydraulic reverse shuttle and Stop&Go system.
- Mechanical transmission: 30 FWD + 15 REV speeds with underdrive and supercreeper gear, or 45 FWD + 45 REV speeds with HML (3-speed Powershift).
- Overspeed gearbox for top speed of 50 km/h, or electronically limited top speed of 40 km/h at engine economy speed.
- Hydraulic circuit with 54 l/min pump, 3 rear auxiliary valves mechanically or electrohydraulically operated and 4 mid-mounted couplings.
- Rear PTO with 540/540ECO/1000 speeds and ground speed PTO.
- All-wheel braking with hydraulically operated wet disc brakes on all 4 wheels.
- Electrohydraulically engaged 4WD, PTO and differential locks.
- Mechanically or electronically controlled rear hitch with maximum lift capacity of 2600 kg.

*Hi-Steer version,
unparalleled
agility and
comfort.*

FRUTTETO ³ S/V		80	90.3	90	100	110
Engine		SDF	SDF	SDF	SDF	SDF
Emissions		Tier3	Tier3	Tier3	Tier3	Tier3
Cylinders/Displacement	no./cc	3/3000	3/3000	4/4000	4/4000	4/4000
Max. power (ECE R 120)	kW/HP	60/82	66/90	63/85	71/96	78/106
Maximum rear lift capacity	kg	2600	2600	2600	2600	2600
Wheelbase (4WD/2WD)	mm	2027	2027	2157/2100	2157	2157
Minimum width	mm	1160	1160	1160	1160	1160
Weight with ROPS (min-max)	kg	2197-2510	2197-2510	2337-2650	2337-2650	2337-2650
Weight with cab (min-max)	kg	2347-2660	2347-2660	2487-2800	2487-2800	2487-2800

THE NEW KING BETWEEN THE ROWS.

Incredible agility, power, technology and comfort - all in a single machine: Frutteto S/V ActiveDrive, a tractor designed specifically for the needs of the vineyard and fruit orchard.

The Frutteto S/V ActiveDrive range is a variegated family of specialised tractors designed and developed specifically for use in the vineyard and fruit orchard, and catering for a broad spectrum of needs. A choice of cab or specific platform versions for different wheel sizes, mechanical or electrohydraulic controls and a generous selection specification variants lets the professional define the ideal configuration for superior productivity in the fruit orchard or vineyard. Everything is focused on driver comfort. The independent suspension geometry optimises performance and comfort

in all conditions, and drastically reduces vibration. The innovative technology used for the suspension is unique. Two hydraulic cylinders, with position sensors, a system allowing the suspension arms to pivot independently on the front suspension carrier, a speed sensor, a braking sensor and three shock absorbers all contribute to maximum driver comfort and tractor stability whether working in the field or driving at speed on the road. Boasting advanced electronics and innovative vehicle control software, Frutteto S/V ActiveDrive tractors also feature Anti-dive and Anti-rolling

functions, which improve stability, grip and safety. The traction control system ensures sure-footed traction even in varying terrain conditions by controlling the front differential lock discs proportionally. Last but not least, the suspension geometry allows for a very tight turning circle, for unparalleled manoeuvrability and agility.

FRUTTETO S/V ActiveDrive		80	90.3	90	100	110
Engine		SDF	SDF	SDF	SDF	SDF
Emissions		Tier3	Tier3	Tier3	Tier3	Tier3
Cylinders/Displacement	no./cc	3/3000	3/3000	4/4000	4/4000	4/4000
Max. power (ECE R 120)	kW/HP	60/82	66/90	63/85	71/96	78/106
Maximum rear lifting capacity	kg	2600	2600	2600	2600	2600
Wheelbase	mm	2027	2027	2157	2157	2157
Minimum width	mm	1160	1160	1160	1160	1160
Weight with ROPS (min-max)	kg	2297-2610	2297-2610	2437-2750	2437-2750	2437-2750
Weight with cab (min-max)	kg	2447-2760	2447-2760	2587-2900	2587-2900	2587-2900

FRUTTETO S/V ActiveDrive



Unique technological features for increased operator comfort and safety.

New suspension with independent front wheels.



KRYPTON³ V



- 3-cylinder SDF Tier3 turbo intercooler engines with electronic engine governor.
- 12 + 8 speed transmission with underdrive.
- 42 l/min hydraulic system with 3/4 auxiliary valves with flow regulator.
- Dedicated 18 l/min steering pump.
- PTO with multiplate wet clutch and 2 speeds (540/540ECO or 540/1000).
- Hydraulically controlled servo-assisted wet band steering brakes.
- Compact dimensions and excellent manoeuvrability.
- Dry track chains and generous footprint area.

Central shift levers.



KRYPTON ³ V		80
Engine		SDF
Emissions		Tier3
Cylinders/Displacement	no./cc	3/3000
Max. power (ECE R 120)	kW/HP	60/82
Maximum rear lifting capacity	kg	2500
Wheelbase (min-max)	mm	1410-1575
Minimum width	mm	1180
Weight with roll bar (min-max)	kg	3160-3490

KRYPTON³ F



- 4-cylinder SDF Tier3 turbo intercooler engines with electronic engine governor.
- 16 + 16 speed transmission with underdrive or low range gear and synchronised reverse shuttle.
- Open centre circuit available with 52 l/min pump and up to 14 hydraulic distributor couplings with flow regulator.
- Dedicated 25 l/min steering pump.
- 2-speed PTO with multiplate wet clutch: 540/540ECO.
- Hydraulically controlled servo-assisted wet band steering brakes.
- Comfortable driver seat on platform mounted on Silent-Blocks.
- Lubricated track chains with 5 rollers per track, and generous footprint area.

*Hand
throttle
on right
of driver.*



KRYPTON ³ F		90	100
Engine		SDF	SDF
Emissions		Tier3	Tier3
Cylinders/Displacement	no./cc	4/4000	4/4000
Max. power (ECE R 120)	kW/HP	62.5/85	70/95
Maximum rear lifting capacity	kg	3000	3000
Wheelbase	mm	1650	1650
Width (min-max)	mm	1360-1750	1460-1800
Footprint area (min-max)	cm ²	8990-11600	10454-13032
Weight with roll bar (min-max)	kg	4283-4514	4335-4630

KRYPTON³ SIX

- 4 cylinder SDF Tier3 turbo intercooler engines with electronic engine governor.
- 16 + 16 speed transmission with underdrive or low range gear and synchronised reverse shuttle.
- Open centre circuit available with 52 + 25 l/min tandem pumps and 10 hydraulic distributor couplings with flow regulator.
- PTO with multiplate wet clutch and 2 speeds (540/540ECO or 540/1000).
- Hydraulically controlled servo-assisted wet band steering brakes.
- Driver seat on platform mounted on Silent-Blocks.
- Lubricated track chains with 6 rollers per track, and generous footprint area.

KRYPTON ³ SIX		110
Engine		SDF
Emissions		Tier3
Cylinders/Displacement	no./cc	4/4000
Max. power (ECE R 120)	kW/HP	75/102
Width	mm	1800
Maximum rear lifting capacity	kg	3000
Wheelbase	mm	1850
Footprint area	cm ²	14292
Weight with roll bar	kg	5470

Ergonomic driving position with flat deck platform.



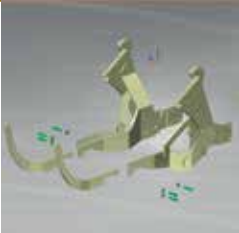
SAME FRONT LOADERS



*Light Kit:
frame
and mounting
bolts.*

*Ready Kit:
frame, mounting
bolts
and
supplementary
hydraulic and
electric systems.*

- Original Light Kit and Ready Kit available directly from factory.
- Sturdy, resilient base frame.
- Maximum load height 4.81 m.
- The loader and the respective mounts do not obstruct the tractor maintenance points.
- QuickFix quick connection system available as an option for attaching the front loader and connecting implements quickly and simply.
- Superior lifting capacity through the entire lift range.
- Simple and precise control with a joystick, or single lever controls.
- ComfortDrive function protects the driver and loader attachments against external vibration.



Area dealers

same-tractors.com

SAME is a brand of  SAME DEUTZ-FAHR

