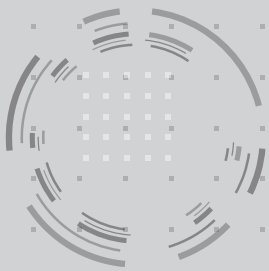


A large, stylized white graphic on a red background, resembling a flame or a stylized letter 'P'. It has a thick, bold outline and a solid white fill.

SAME

[Product Range]

2022

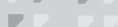
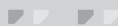
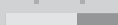


DNA: 100% SAME



**The future belongs to those who
forge it for themselves.**

RANGE
models



At the beginning, a dream begins: light and fragile as a seed, at the mercy of what happens around it. To make a dream take root and then bloom, it takes certain special qualities. It takes commitment, determination and vision. It takes brilliant ideas, strong hands that are not afraid to work and a heart filled with passion. It takes creativity, the will to learn, instinct and talent. And time, lots of time. We know that you can identify with all of this, as have we, since 1927: the year in which Eugenio and Francesco Cassani decided that the time was right to plant the seed of their dream. This was the dawn of a new era in the relationship between man and machine: and their intention was for SAME (Società Accomandita Motori Endotermici) to be a key driving force in the development of Italian agricultural technology. And since then, generation after generation, one innovative idea at a time, this is exactly what SAME has done. Each new project draws from this rich heritage and the forward-looking DNA of SAME, which spurs us on in the continuous pursuit of: more efficient engines, advanced mechanical solutions, digital farming management systems and superior comfort. Technological solutions conceived to answer the needs of tomorrow's farmer, by a company that has always chosen to forge its own future.





CONTENT

STANDARD FOR THE USE OF THE SYMBOLS OF STAGES AND
THE SYMBOLS OF THE STAGES AND THE SYMBOLS
STANDARD FOR THE USE OF THE SYMBOLS OF STAGES AND
THE SYMBOLS OF THE STAGES AND THE SYMBOLS



| | |
|--------|---|
| [4] | Open field |
| [12] | Vineyards, orchards, compact tractors (Explorer TB: As long as stock lasts - Stage IIIB) |
| [22] | Crawlers (As long as stock lasts - Stage IIIB) |
| [25] | Front loaders |
| [26] | SDF Smart Farming Solutions |

VIRTUS

OPEN FIELD



The efficiency you expect from a Virtus of the future.

OPEN FIELD

Since the first generation launched in 2013, the Virtus has always been built specifically to deliver extraordinary efficiency and productivity in a very broad spectrum of applications.

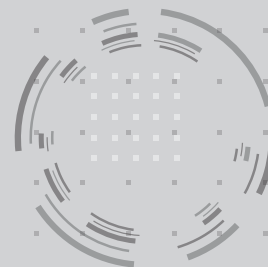
SAME has always been renowned for creating designs that are visually appealing while accentuating the usability and efficacy of the functions of the machine itself. The latest SAME Virtus family continues this tradition, introducing a single piece cowl with an all-new design which offers class-topping forward visibility and best manoeuvrability.

Offered in a choice of three models, the new Virtus family is powered by the brand new FARMotion 45 engines with maximum power outputs from 116 to 143 HP (incl. Boost). The electronic control system of the FARMotion 45 engines manages the functions of the 2000 bar common rail injection system, the e-Visco fan and, on 125 and

135 models, even the vane geometry of the VTG turbocharger; advanced technological solutions conceived to meet the needs for torque and power of today's agricultural machine.

The wide choice of transmission configurations offered also contributes to the versatility of the Virtus family. For a more traditional configuration, customers can opt for an easy-to-use but equally functional mechanical gearbox 5-gear with 3-stage Powershift (up to 60+60). SAME Virtus tractors are now available also with the all-new RVshift transmission, an automatic transmission controllable entirely from a single joystick interface. This is a Full Powershift transmission concept with a total of 20+16 speeds, boasting an intelligent transmission management system ensuring rapid, smooth shifts and unrivalled levels of comfort.





| VIRTUS | | Powershift | | | RVshift | | |
|--------------------------------------|-------|--------------|----------|----------|----------|----------|-----------|
| | | 115 | 125 | 135 | 115 | 125 | 135 |
| Engine | | FARMotion 45 | | | | | |
| Emission level | | Stage V | | | | | |
| Cylinders/Displacement | n°/cc | 4/3849 | | | | | |
| Max. power (ECE R120) | kW/Hp | 85.6/116 | 93/126 | 99.8/136 | 89.3/121 | 95/129 | 100.8/137 |
| Max. power with Boost (ECE R120) | kW/Hp | 93/126 | 100/136 | 105/143 | 93/126 | 100/136 | 105/143 |
| Power at rated speed (ECE R120) | kW/Hp | 81.2/110 | 88.2/120 | 94.6/129 | 84.7/115 | 90.1/123 | 95.6/130 |
| Rear linkage lifting capacity (max.) | Kg | 5410 | 7000 | | 7000 | | |
| Wheelbase | mm | 2480 | | | 2510 | | |
| Total unladen weight | Kg | 4500 | 4750 | | 4900 | | |

Both 4WD and the differential lock are electrohydraulically engaged, and can also be managed entirely automatically by the ASM function. The suspended front axle available as option increases operator comfort and improves safety and stability of the tractor.

To cater for the needs of any task, the new Virtus Stage V family is available with every possible standard PTO speed mode - namely 540, 540 ECO, 1000 and 1000 ECO - and with groundspeed mode, with independent output stub shaft. The rear lift has a maximum capacity of 5000 kg as standard, which can be increased to 7000 kg with optional supplementary cylinders. Naturally, the rear lift is electronically controlled and comes complete with anti-dumping - a function attenuating the oscillation produced by mounted implements - as standard, while the optional 3000 kg front lift is also available with a 1000 rpm front PTO.

SAME Virtus Stage V tractors can be configured with a choice of different hydraulic system

variants. The class-topping configuration is a Load Sensing hydraulic system with a flow rate of 120 l/min, up to 10 rear outlets and Power Beyond couplers. The hydraulic steering system is fed by an independent circuit with its own dedicated pump.

Depending on models the TopVision cab is available in a choice of 3 different equipment levels, all of which offering the space, comfort and features normally seen only on more expensive tractor models. Mechanical cab suspension, LED lights package, iMonitor, high visibility roof, a refrigerated compartment with 12V power outlet, USB ports and an audio system, with DAB+ radio are just some of the optional accessories available for the new SAME Virtus Stage V family. The new Virtus family also boasts integrated SDF Smart Farming Solutions, which open the door to a host of new digital services allowing today's farmer to work more rapidly and more precisely than ever, optimising productivity.



OPEN FIELD



New bonnet design with LED lights.



RVshift user interface.

EXPLORER

OPEN FIELD



Evolution of a masterpiece.

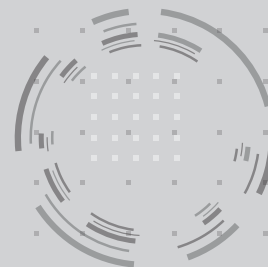
Innovation, versatility, high technology and excellent quality are the fundamental pillars on which, from 1983, the SAME Explorer range has been founded. Now, Explorer boasts features and a wide range that make it the perfect workmate. Five different models, two versions (LS/GS) and countless options allow everyone to have the tractor perfectly tailored to their specific needs.

All products from the Explorer family are fitted with FARMotion 35 (3-cyl.) or FARMotion 45 (4-cyl.) turbo intercooled Stage V engines. There are a wide variety of transmission configurations, mechanical, Hi-Lo or 3 Powershift speeds with

automatic power shift (APS), to allow the driver to maintain the ideal speed. With a choice of features such as the reverse shuttle with integrated responsiveness setting control, the Stop&Go function and a hydraulic system capable of a flow rate of 55 l/min or with a 90 l/min on-demand double pump, Explorer tractors make hitching implements child's play and are extraordinarily effective when loading and unloading with a front loader. Explorer tractors are a pleasure to drive in the field and the mechanical or electronic rear hitch is easy to use, maximising productivity at all times. Many of the implements used to prepare the soil

OPEN FIELD





| EXPLORER | | 95 | 100 | 105 | 115 | 125 |
|--------------------------------------|-------|--------------|--------------|--------------|------------|------------|
| Engine | | FARMotion 45 | FARMotion 35 | FARMotion 45 | | |
| Emission level | | Stage V | | | | |
| Cylinders / Displacement | n°/cc | 4 / 3849 | 3 / 2887 | 4 / 3849 | | |
| Max. power (ECE R120) | kW/Hp | 70 / 95 | 75 / 102 | 78 / 106 | 85 / 116 | 93 / 126 |
| Power at rated speed (ECE R120) | kW/Hp | 66.4 / 90 | 71.1 / 97 | 74 / 101 | 80.6 / 110 | 88.2 / 120 |
| Rear linkage lifting capacity (max.) | Kg | 4525 | | | 4855 | 5410 |
| Wheelbase | mm | 2400 | 2350 | 2400 | | |
| Total unladen weight | Kg | 3950 | 3800 | 3950 | 4250 | 4350 |

for sowing have very high PTO power demands, calling for an engine capable of delivering plenty of performance in all conditions. Offered with the choice of a 4-speed PTO, a ground speed PTO synchronised with the transmission and with an independent output shaft, and a 1,000 rpm front PTO, to provide the ideal power solution for any PTO driven implement, Explorer tractors are multi-role machines capable of catering for a wide range of applications.

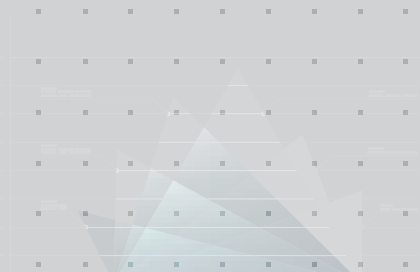
Explorer tractors combine unparalleled flexibility with superior productivity to offer the ideal answer to the needs of the agricultural professional. The functional and comfortable cab offers the driver a pleasant working environment. Every product in the Explorer family can be made front loader ready (Light or Ready kit) straight from the factory.



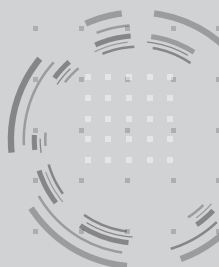
Best usability thanks to the well-known colour coding.



OPEN FIELD



New roof design with up to 12 LED working lights.



DORADO CVT

OPEN FIELD



Class-beating technology for total versatility.

The new Dorado CVT Stage V sets a new benchmark for the utility tractor segment, not only for the compactness and outstanding agility that have always set Dorado tractors apart, but also for superlative high-tech content. These machines boast a suite of exclusive high-tech features, which include powerful FARMotion 45 engines with Overboost power management, the CVT continuously variable transmission, the ActiveDrive suspended front axle, integrated SDF Smart Farming Solutions and the innovative MaxCom armrest, developed specifically by SAME engineers to make your work even more comfortable and productive. The Dorado CVT also stands head and shoulders above its rivals for its extraordinary versatility: on the traditional farm, these machines are perfect for sowing, hay-making and applying protective crop treatments in safety (with the pressurised cab with Cat. 4 filtration system), and also offers outstanding performance in the most common soil preparation tasks. The compact dimensions and the powerful hydraulic system of these tractors also make them ideal for working in widely spaced fruit orchards and vineyards.

| DORADO CVT | | 95 | 105 | 115 |
|--|-------|--------------|----------|------------|
| Engine | | FARMotion 45 | | |
| Emission level | | Stage V | | |
| Cylinders / Displacement | n°/cc | 4 / 3849 | 4 / 3849 | 4 / 3849 |
| Max. power (ECE R120) | kW/Hp | 70 / 95 | 78 / 106 | 85 / 116 |
| Max. power with Overboost (ECE R120) | kW/Hp | - | - | 93 / 126 |
| Power at rated engine speed (ECE R120) | kW/Hp | 66.4 / 90 | 74 / 101 | 80.6 / 110 |
| Rear linkage lifting capacity (max.) | Kg | 4310 | | |
| Wheelbase | mm | 2271 | | |
| Overall rear width (min.-max.) | mm | 1745-2180 | | |
| Total unladen weight | Kg | 4200 | | |

OPEN FIELD



ActiveDrive independent front suspension.

DORADO

OPEN FIELD



One of SAME's most successful products.

Created to provide the ideal answer for working in the open field and for general farm tasks, but also in wide-spaced orchards, the SAME Dorado family offers an impressive variety of configurations, superior comfort and modern features to take on any job with ease. The 4-post cab – available with two roof configurations – offers outstanding visibility in any conditions. Visibility is ensured even in the night, thanks to the new LED light package. Featuring a compact design, the latest generation of FARMotion 45 engines and 3 Powershift ratios, the optional electronic rear lift, and a wide choice of tyres options, which includes also the innovative PneuTrac tyre, Dorado tractors are ready to take on the agricultural challenges of tomorrow.

| DORADO | | 95 | 105 |
|--|-------|--------------|--------|
| Engine | | FARMotion 45 | |
| Emission level | | Stage V | |
| Cylinders / Displacement | n°/cc | 4/3849 | |
| Max. power (ECE R120) | kW/Hp | 70/95 | 78/106 |
| Power at rated engine speed (ECE R120) | kW/Hp | 66.4/90 | 74/101 |
| Rear linkage lifting capacity (max.) | Kg | 3600 | |
| Wheelbase | mm | 2271 | |
| Total unladen weight | Kg | 3575 | |

OPEN FIELD



Electronic rear lift with vibration damping function.



DORADO NATURAL

OPEN FIELD



Naturally a winner.

Conceived to respond to the needs of open field and general farm tasks, the SAME Dorado Natural family, with its new FARMotion 35 Stage V engines, is perfectly at home in any situation and boasts a suite of practical, high tech solutions, superior comfort and a huge choice of configurations, making it the ideal ally to let you tackle any job with ease. The transmissions make it possible to always have the correct pace in the field and drive on the road at 40 km/h with the engine at an economic speed. The rear lift, with the legendary efficiency typical of a SAME mechanically controlled unit, has a maximum capacity of 3500 Kg. In addition is now available the EasyLift control that allows to raise and lower the implements using a single button on the console. The PTO offers up to 3 speeds (540/540 ECO/1000) and groundspeed function. The cab offers a spacious, comfortable and ergonomically optimised work environment with excellent all-round visibility.

OPEN FIELD

| DORADO Natural | | 70 | 80 | 90 | 100 |
|--------------------------------------|-------|--------------|-----------|-----------|-----------|
| Engine | | FARMotion 35 | | | |
| Emission level | | Stage V | | | |
| Cylinders / Displacement | n°/cc | 3/2887 | | | |
| Max. power (ECE R120) | kW/Hp | 48.9 / 66 | 55.8 / 76 | 67 / 91 | 75 / 102 |
| Power at rated speed (ECE R120) | kW/Hp | 48 / 65 | 55.2 / 75 | 63.5 / 86 | 71.1 / 97 |
| Rear linkage lifting capacity (max.) | Kg | 3500 | | | |
| Wheelbase | mm | 2100 | | | |
| Total unladen weight | Kg | 3250 | | 3350 | |



Ergonomic right console with new Easy Lift control.



ARGON

OPEN FIELD



The tractor for any application.

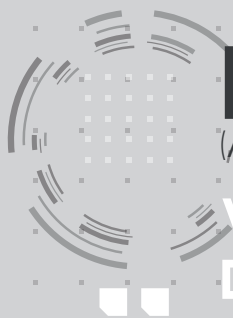
The Argon range is distinguished by its excellent handling, considerable robustness and extreme simplicity and easy of use, all of which are further enhanced by the all new FARMotion 35 Stage V engines, which were designed specifically for agricultural use. The Argon range offers various transmission options. 2WD versions offer 12 forward speeds and 3 reverse speeds (with supercreeper gear) for a top speed of 30 km/h, while 4WD models are equipped with a 15+15 transmission that allows to reach 40 km/h (also available as option with ECO engine rpm). The latter version offers the electrohydraulic engagement of front wheel drive and of the front and rear differentials as standard equipment. The rear PTO comes as standard with 540 rpm and 540 ECO speed modes, while 1,000 rpm or Syncro modes may be added as an option. The hydraulic system offers a flow rate of up to 56 l/min and is configurable with up to 6 rear ways, while the lift, now available with the new EasyLift control, has a maximum capacity of 3500 Kg. The driver area offers superior comfort, with a lower profile centre tunnel, the new instrument cluster and the new controls, which are even more comfortable and easy to use.

| ARGON | | 70 | 80 | 90 | 100 |
|--------------------------------------|-------|--------------|-----------|-----------|-----------|
| Engine | | FARMotion 35 | | | |
| Emission level | | Stage V | | | |
| Cylinders / Displacement | n°/cc | 3 / 2887 | | | |
| Max. power (ECE R120) | kW/Hp | 48.9 / 66 | 55.8 / 76 | 67 / 91 | 75 / 102 |
| Power at rated speed (ECE R120) | kW/Hp | 48 / 65 | 55.2 / 75 | 63.5 / 86 | 71.1 / 97 |
| Rear linkage lifting capacity (max.) | Kg | 3500 | | | |
| Wheelbase (4WD / 2WD) | mm | 2100 / 2166 | | 2100 / - | |
| Total unladen weight (4WD / 2WD) | Kg | 3000 / 2800 | | 3000 / - | |

OPEN FIELD



Up to 3 spool valves with flow regulator.



EXPLORER TB

(As long as stock lasts - Stage IIIB)

VINEYARDS, ORCHARDS, COMPACT TRACTORS

Unique tractors dedicated to the specialist farmer.

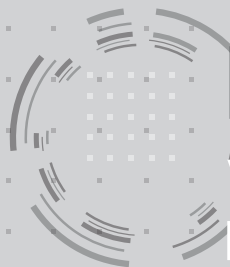
These extremely versatile, practical and potent multirole machines are ready to take on even the toughest job. Available as two versions - 105 and 115 - Explorer TB models, are designed for the farmer with specific requirements. The unbeatable choice for olive groves, widely spaced fruit orchards, greenhouses and mountain terrain with its limited overall height, low centre of gravity and sturdy construction intended for working with heavy duty implements. FARMotion 4 cylinder turbo-intercooled engines deliver immediately responsive power in all conditions.



Hydraulic PowerShuttle with Stop&Go.

| EXPLORER TB | | 105 | 115 |
|--------------------------------------|-------|------------|--------|
| Engine | | FARMotion | |
| Emission level | | Stage II B | |
| Cylinders / Displacement | n°/cc | 4/3849 | |
| Max. power (ECE R120) | kW/Hp | 75/102 | 83/113 |
| Power at rated speed (ECE R120) | kW/Hp | 71.5/97 | 79/107 |
| Rear linkage lifting capacity (max.) | Kg | 4525 | |
| Wheelbase | mm | 2400 | |
| Total unladen weight | Kg | 3300 | 3500 |





FRUTTETO CVT

VINEYARDS, ORCHARDS, COMPACT TRACTORS



The most advanced range of the Frutteto family.

Perfectly at home in any conditions, the SAME Frutteto CVT is a tough, specialised tractor that is compact and yet extraordinarily sure-footed. It embodies the state of the art in specialised tractor technology, as demonstrated by its efficient FARMotion 35 and 45 engine with Overboost power management, innovative continuously variable transmission, flat-floored cab boasting the new MaxCom armrest, ActiveDrive front axle and a highly modular hydraulic system equipped with an 84 l/min fixed displacement pump or a 100 l/min Load Sensing pump. Technological solutions that up until now had only been seen on open field tractors.

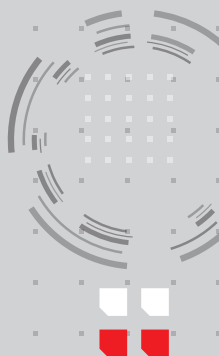
| FRUTTETO CVT | | 90 | 90 | 100 | 105 | 115 |
|--|-------|--------------|--------------|--------------|--------------|----------|
| Engine | | FARMotion 35 | FARMotion 45 | FARMotion 35 | FARMotion 45 | |
| Emission level | | Stage V | | | | |
| Cylinders / Displacement | n°/cc | 3/2887 | 4/3849 | 3/2887 | 4/3849 | |
| Max. power (ECE R120) | kW/Hp | 67/91 | 70/95 | 75/102 | 78/106 | 85/116 |
| Max. power with Overboost (ECE R120) | kW/Hp | - | - | - | - | 93/126 |
| Power at rated engine speed (ECE R120) | kW/Hp | 63.5/86 | 66.4/90 | 71.1/97 | 74/101 | 80.6/110 |
| Rear linkage lifting capacity (max.) | Kg | 3800 | | | | |
| Wheelbase | mm | 2044 | 2174 | 2044 | 2174 | |
| Overall rear width (min.-max.) | mm | 1440-1670 | | | | |
| Total unladen weight | Kg | 3635 | 3860 | 3635 | 3860 | |

VINEYARDS, ORCHARDS, COMPACT TRACTORS



Up to 4 high-flow mid mounted spool valves and up to 3 hydraulic ways duplicated from rear and 2 free returns.





FRUTTETO

VINEYARDS, ORCHARDS, COMPACT TRACTORS

Uncompromised comfort in orchards and vineyards.

VINEYARDS, ORCHARDS, COMPACT TRACTORS

SAME Frutteto is the perfect tool for maximising productivity in the fruit orchard and vineyard. Frutteto Stage V models are powered by the advanced FARMotion 35 and 45 engines specifically developed for agriculture. With a 3-cylinder configuration, FARMotion 35 ensures a short wheelbase allowing higher maneuverability. FARMotion 45, instead, with its generous displacement offers outstanding performances. Compliance with current Stage V emissions regulations is ensured by a complete pack of exhaust after-treatment solutions, which are wisely integrated by SAME engineers in order to keep the bonnet profile tapered and sloping. A tractor that understands and answers the needs of today's farmer. This family of tractors offers a wide choice of configurations, with a mechanical or powershuttle, mechanical or electrohydraulic controls of PTO, a range of different tyre diameters and an extensive selection of hydraulic configurations. Compact dimensions, an incredibly tight turning circle and outstanding manoeuvrability make the Frutteto the ideal tractor for working in even the most restricted spaces and with very limited headland.

| FRUTTETO | | 90 | 95 | 100 | 105 | 115 |
|--|-------|--------------|--------------|--------------|--------------|------------|
| Engine | | FARMotion 35 | FARMotion 45 | FARMotion 35 | FARMotion 45 | |
| Emission level | | Stage V | | | | |
| Cylinders / Displacement | n°/cc | 3 / 2887 | 4 / 3849 | 3 / 2887 | 4 / 3849 | |
| Max. power (ECE R120) | kW/Hp | 67 / 91 | 70 / 95 | 75 / 102 | 78 / 106 | 85 / 116 |
| Power at rated engine speed (ECE R120) | kW/Hp | 63.5 / 86 | 66.4 / 90 | 71.1 / 97 | 74 / 101 | 80.6 / 110 |
| Rear linkage lifting capacity (max.) | Kg | 3940 | | | | |
| Wheelbase | mm | 2044 | 2174 | 2044 | 2174 | |
| Overall rear width (min.-max.) | mm | 1440-1670 | | | | |
| Total unladen weight | Kg | 3460 | 3515 | 3460 | 3515 | |



New comfortable cab with flat floor and new console.





FRUTTETO 80 CLASSIC

VINEYARDS, ORCHARDS, COMPACT TRACTORS

The perfect combination of versatility and comfort.

The new Frutteto 80 Classic is the ideal machine for orchards with broadly spaced rows and is also built tough enough to tackle tasks in the open field. Available in a comprehensive choice of configurations, with a cab or fold-down ROPS, with a fixed front axle or the ActiveDrive suspended front axle system, and with an all-mechanical transmission or the 3-stage Powershift (HML) transmission, the Frutteto 80 Classic Stage V caters for the needs of any vineyard or orchard. Frutteto 80 Classic tractors are powered by the new three-cylinder FARMotion 35 engines, powerplants whose extraordinary compact overall dimensions maximise the agility of these machines by allowing for one of the shortest wheelbases in this class. Compliance with Stage V emissions standards is achieved with a simplified exhaust aftertreatment system which does not require the use of AdBlue. Efficiency, manoeuvrability and comfort were top priorities in the development of the Frutteto 80 Classic, to let professionals take the productivity of their work even further.

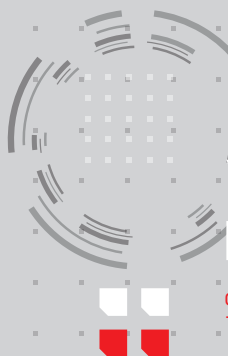
| FRUTTETO 80 CLASSIC | | 80 |
|--|--------|--------------|
| Engine | | FARMotion 35 |
| Emission level | | Stage V |
| Cylinders/Displacement | No./cc | 3/2887 |
| Max. power (ECE R120) | kW/HP | 55.8/76 |
| Power at rated engine speed (ECE R120) | kW/HP | 55.2/75 |
| Rear linkage lifting capacity (max.) | Kg | 2800 |
| Wheelbase | mm | 2011 |
| Overall rear width (min.-max.) | mm | 1441-1628 |
| Total unladen weight | Kg | 2730 |
| Total unladen weight with cab | Kg | 2995 |

VINEYARDS, ORCHARDS, COMPACT TRACTORS



Cab tractors fitted as standard with Activated carbon filter.





FRUTTETO NATURAL

VINEYARDS, ORCHARDS, COMPACT TRACTORS

Specialised in simplicity.

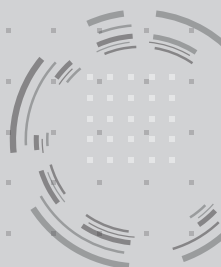
The direct descendent of the highly successful SAME Frutteto range, the new Frutteto Natural Stage V family offers a choice of tractors conceived for unparalleled efficiency and reliability. The easy-to-use, the high configurability, the precise rear lift and the front axle with brakes are just some of the standout features of this new family. Frutteto Natural Stage V features the state-of-art FARMotion 35 engines that, in this power range, are able to fulfil the strict requirements of Stage V with DPF only, without requiring the use of additional additives, such as AdBlue. The wide choice of transmission, available from 8+8 to 30+15 with mechanical splitter, and the possibility to configure the tractor with a standard or a compact rear three-point hitch give you the possibility to customise the tractor according to the needs of your farm.

| FRUTTETO Natural | | 70 | 80 |
|--|-------|--------------|---------|
| Engine | | FARMotion 35 | |
| Emission level | | Stage V | |
| Cylinders/Displacement | n°/cc | 3/2887 | |
| Max. power (ECE R120) | kW/Hp | 48.9/66 | 55.8/76 |
| Power at rated engine speed (ECE R120) | kW/Hp | 48/65 | 55.2/75 |
| Rear linkage lifting capacity (max.) | Kg | 3050 | |
| Wheelbase | mm | 1996 | |
| Overall rear width (min.-max.) | mm | 1340-1640 | |
| Total unladen weight | Kg | 2325 | |

VINEYARDS, ORCHARDS, COMPACT TRACTORS



High ergonomic platform.



DELFINO

VINEYARDS, ORCHARDS, COMPACT TRACTORS



The complete multirole specialist.

The Delfino is the ideal tool for all tasks where compactness is crucial, and yet still offers levels of comfort you'd expect from a bigger, more expensive machine. With a choice of extremely compact, high performance Stage V compliant engines and 12+12 or 16+16 speed transmissions, electrohydraulically lockable differentials and high capacity lifts and hydraulic systems, these machines are ideal for agricultural and municipal applications, and also for ground care tasks. These machines are also available as either platform variants with fold-down front roll-bar, or cab variants.

| DELFINO | | 50 BASSO | 50 | 60 |
|--|-------|-----------|-------|---------|
| Engine | | Perkins | | |
| Emission level | | Stage V | | |
| Cylinders/Displacement | n°/cc | 4/2216 | | |
| Max. power (ECE R120) | kW/Hp | 38/51 | 38/51 | 43.5/59 |
| Power at rated engine speed (ECE R120) | kW/Hp | 38/51 | 38/51 | 43.5/59 |
| Rear linkage lifting capacity (max.) | Kg | 1320 | | |
| Wheelbase | mm | 1800 | | |
| Overall rear width (min.-max.) | mm | 1375-1610 | | |
| Total unladen weight | Kg | 1450 | 1550 | 1600 |
| Total unladen weight with Cab | Kg | - | 1800 | 1850 |

VINEYARDS, ORCHARDS, COMPACT TRACTORS



Available as platform or cab versions.



FRUTTETO CVT S/V

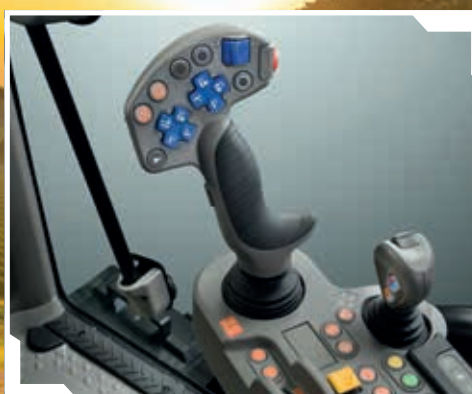
VINEYARDS, ORCHARDS, COMPACT TRACTORS



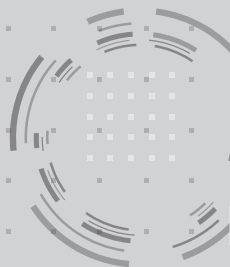
The specialist for excellence in vineyards and narrow orchards.

Frutteto CVT S and Frutteto CVT V are specifically configured for working more effectively between very narrowly spaced rows. Regardless the compact size, an exceptional comfort level is ensured by the 4-post cab with the exclusive MaxCom armrest linked to the seat and a completely flat floor. The technological superiority of the Frutteto CVT S and V is demonstrated by the extensive choice of configurations available, and features such as the innovative continuously variable transmission, the full integration with SDF Smart Farming Solutions and the powerful hydraulic systems equipped with a Load Sensing pump capable of delivering a flow rate of 100 l/min at an engine speed of just 1,850 rpm. Like the wider models of Frutteto CVT family, also Frutteto CVT S and V are powered by the innovative FARMotion 35 and 45 engines, specifically developed for agriculture and with an overall compact size which allows a tapered and sloping bonnet profile.

| FRUTTETO CVT S/V | | 90 | 95 | 100 | 105 | 115 |
|---|-------|--------------|--------------|--------------|--------------|------------|
| Engine | | FARMotion 35 | FARMotion 45 | FARMotion 35 | FARMotion 45 | |
| Emission level | | Stage V | | | | |
| Cylinders / Displacement | n°/cc | 3 / 2887 | 4 / 3849 | 3 / 2887 | 4 / 3849 | |
| Max. power (ECE R120) | kW/Hp | 67 / 91 | 70 / 95 | 75 / 102 | 78 / 106 | 85 / 116 |
| Max. power with Overboost (ECE R120) | kW/Hp | - | - | - | - | 93 / 126 |
| Power at rated engine speed (ECE R120) | kW/Hp | 63.5 / 86 | 66.4 / 90 | 71.1 / 97 | 74 / 101 | 80.6 / 110 |
| Rear linkage lifting capacity (max.) | Kg | 2600 | | | | |
| Wheelbase | mm | 2086 | 2216 | 2086 | 2216 | |
| Overall rear width (min.-max.) - Frutteto CVT S | mm | 1265-1515 | | | | |
| Overall rear width (min.-max.) - Frutteto CVT V | mm | 1080-1300 | | | | |
| Total unladen weight - Frutteto CVT S | Kg | 3565 | 3620 | 3565 | 3620 | |
| Total unladen weight - Frutteto CVT V | Kg | 3435 | 3490 | 3435 | 3490 | |



Fully integrated into the seat, the MaxCom armrest is the centre of control of the Frutteto CVT S and V tractors



FRUTTETO S/V

VINEYARDS, ORCHARDS, COMPACT TRACTORS



Small and agile when needed, but also powerful enough for any task.

The new Frutteto S/V Stage V are fitted with FARMotion 35 and 45 engines, with 3 or 4 cylinders. The first ensures shorter wheelbase the latter ensure highest performances even with the most power-hungry implements. With a choice of several transmission configuration, a range of different tyres and hydraulics layout, combined with compact dimensions and impressive power: Frutteto S/V tractors are the ideal solution for the specialised tasks typical of the vineyard and fruit orchard, where unique capabilities are a must. Boasting a very small turning radius, extreme agility and structural and technological solutions tailored to maximise compactness, the main mission of Frutteto S/V tractors is to cater for the needs of today's farmers. Efficiency, manoeuvrability and comfort are the key strengths of the Frutteto S/V, the product of a long tradition in the field and the commitment to continuously develop and introduce significant technological innovations.

| FRUTTETO S/V | | 90 | 95 | 100 | 105 | 115 |
|---|-------|--------------|--------------|--------------|--------------|------------|
| Engine | | FARMotion 35 | FARMotion 45 | FARMotion 35 | FARMotion 45 | |
| Emission level | | Stage V | | | | |
| Cylinders / Displacement | n°/cc | 3 / 2887 | 4 / 3849 | 3 / 2887 | 4 / 3849 | |
| Max. power (ECE R120) | kW/Hp | 67 / 91 | 70 / 95 | 75 / 102 | 78 / 106 | 85 / 116 |
| Power at rated engine speed (ECE R120) | kW/Hp | 63.5 / 86 | 66.4 / 90 | 71.1 / 97 | 74 / 101 | 80.6 / 110 |
| Rear linkage lifting capacity (max.) | Kg | 2600 | | | | |
| Wheelbase | mm | 2086 | 2216 | 2086 | 2216 | |
| Overall rear width (min.-max.) - Frutteto S | mm | 1270-1515 | | | | |
| Overall rear width (min.-max.) - Frutteto V | mm | 1170-1320 | | | | |
| Total unladen weight - Frutteto S | Kg | 3265 | 3320 | 3265 | 3320 | |
| Total unladen weight - Frutteto V | Kg | 3180 | 3235 | 3180 | 3235 | |

VINEYARDS, ORCHARDS, COMPACT TRACTORS



PowerShuttle with SenseClutch.



FRUTTETO 80 S/V CLASSIC

VINEYARDS, ORCHARDS, COMPACT TRACTORS

Uncompromisingly efficient.

The tractors of the new SAME Frutteto 80 S/V Classic family inherit all the strengths of the previous generation and are now also compliant with Stage V emissions standards, featuring a simplified exhaust aftertreatment system with no SCR catalytic converter, which does not use AdBlue. The compact FARMotion 35 engine contributes to giving Frutteto 80 S/V Classic tractors one of the shortest wheelbases in its class which, combined with the generous maximum steering angle of the front axle, translates to superlative agility. Boasting an overall width of 1.16 to 1.46 metres, depending on the variant, Frutteto 80 S/V Classic tractors are perfectly at ease working between even the most narrowly spaced rows. Available in a wide choice of variants, with a mechanical or hydraulic reverse shuttle, with an all-mechanical transmission or a 3-stage Powershift (HML) transmission, and with a fixed front axle or the ActiveDrive suspended front axle system, Frutteto 80 S/V Classic tractors are the perfect choice for operators looking for a machine offering low running costs without compromising high-tech content.

| FRUTTETO 80 S/V CLASSIC | | 80 |
|--|--------|--------------|
| Engine | | FARMotion 35 |
| Emission level | | Stage V |
| Cylinders/Displacement | No./cc | 3/2887 |
| Max. power (ECE R120) | kW/HP | 55.8/76 |
| Power at rated engine speed (ECE R120) | kW/HP | 55.2/75 |
| Rear linkage lifting capacity (max.) | Kg | 2600 |
| Wheelbase | mm | 2050 |
| Overall rear width (min.-max.) | mm | 1166-1463 |
| Total unladen weight | Kg | 2850 |



Comfortable driving area.





ACTIVEDRIVE

ActiveDrive independent wheel front suspension:
An exclusive result of SAME experience in specialised applications.



The independent front arm suspension is the result of SAME's leading experience in specialised technology. This exclusive innovative solution means that on Frutteto, Frutteto S and V and Frutteto CVT, Frutteto CVT S and V tractors as well as on the Dorado CVT models with ActiveDrive, each front wheel can move up and down completely independently of the other. SAME has achieved this without compromising the overall compactness of the machine and while actually lowering the centre of gravity of the tractor, improving weight distribution and, as a result, offering even more impressive stability and safety. This truly formidable package of advanced features allows SAME to offer levels of driver comfort and stability which, until now, had been the sole domain of high-power tractors.

Anti-dive and Anti-roll functions. Reassuring stability, safety and grip.

With innovative suspension geometry and exclusive control software, models with ActiveDrive also feature Anti-dive and Anti-roll functions. Anti-dive improves braking stability and safety by countering sudden front suspension compression and the subsequent shift in load towards the front axle, while Anti-roll automatically adjusts the stiffness of the system in relation to steering angle and ground speed to maximise stability and grip both in the field and on the road.

Superior comfort, whatever the terrain.

Managed by an adaptive electrohydraulic system, the ActiveDrive suspension works in synergy with the DTC electronically controlled differential to offer levels of driving comfort unattainable by any other specialised tractor. The permanently active self-levelling function keeps the cylinders as close to their mid-stroke positions as possible, maximising available suspension travel in all operating conditions. Completing the capabilities of the system, the DTC - the innovative differential with an automatic, progressively engaged differential locking system - is capable of locking by up to 100% to prevent the front wheels from slipping and ensure constant traction in varying grip conditions. In addition to the aforementioned feature, CVT models with ActiveDrive offers additional functionalities, such as the possibility to manually adjust the height of front axle in order to facilitate maintenance or attaching operations.

VINEYARDS, ORCHARDS, COMPACT TRACTORS



KRYPTON

(As long as stock lasts - Stage IIIB)

CRAWLERS



Go-anywhere capability in total safety.

The most powerful model in the family, the SAME Krypton crawler can tackle any terrain. Created to deliver unparalleled performance in the challenging conditions of hilly or mountainous terrain. With a modern design with soft, rounded forms conceived for excellent visibility and to minimise crop damage, the Krypton 115 has a wheelbase of 1,850 mm and an innovative 6-roller undercarriage offering even greater stability and traction.

CRAWLERS



A comfortable, ergonomic driver area.

| KRYPTON | | 115 |
|--------------------------------------|-----------------|-------------|
| Engine | | FARMotion |
| Emission level | | Stage III B |
| Cylinders / Displacement | n°/cc | 4/3849 |
| Max. power (ECE R120) | kW/Hp | 83/113 |
| Rear linkage lifting capacity (max.) | kg | 3170 |
| Wheelbase | mm | 1850 |
| Overall rear width | mm | 1800 |
| Footprint | cm ² | 16650 |
| Weight with ballast | kg | 6140 |





KRYPTON M

(As long as stock lasts - Stage IIIB)

CRAWLERS



The class-beating compact crawler for the open field.



With its extraordinary agility, low centre of gravity, 6-roller undercarriage and extensive ground contact surface area (with 450 mm wide track shoes), the SAME Krypton M was conceived specifically for heavy duty work in the open field and on even the steepest gradients. A 50 l/min hydraulic system, numerous hydraulic couplers (with up to 10 rear couplers and 2 duplicated couplers at the front) and a 540/540ECO (or 540/1000) rear PTO make these tractors supremely versatile. Under the cowl is a 4 cylinder FARMotion engine with 2,000 bar common rail fuel injection.



Up to 10-way rear hydraulic distributors.

| KRYPTON M | | 105 | 115 |
|--------------------------------------|-------|-------------|--------|
| Engine | | FARMotion | |
| Emission level | | Stage III B | |
| Cylinders/Displacement | n°/cc | 4/3849 | 4/3849 |
| Max. power (ECE R120) | kW/Hp | 75/102 | |
| Rear linkage lifting capacity (max.) | Kg | 2800 | |
| Wheelbase | mm | 1850 | |
| Overall rear width | mm | 1800 | |
| Footprint | cm² | 16650 | |
| Weight with ballast | Kg | 5880 | |





KRYPTON F

(As long as stock lasts - Stage IIIB)

CRAWLERS



Tough, versatile and safe: a master of its own world.

The Krypton F was conceived to work in the vineyard. Krypton F models may be equipped with ComfortTrack rubber tracks, which reduce vibration and noise to maximise driver comfort and reduce damage caused by soil compaction. Krypton F tractors are incredibly versatile, and feature two duplicated hydraulic couplers at the front right of the machine for attaching side and front-mounted implements simply and easily - an extremely useful feature when working with pruner attachments, side shoot removers and post drivers.

CRAWLERS

| KRYPTON F | | 90 | | | 100 | |
|--------------------------------------|-------|-------------|-------|-------|-------|-------|
| | | C | N | L | N | L |
| Engine | | FARMotion | | | | |
| Emission level | | Stage III B | | | | |
| Cylinders/Displacement | n°/cc | 3/2887 | | | | |
| Max. power (ECE R120) | kW/Hp | 65/88 | 65/88 | 71/97 | 71/97 | 71/97 |
| Rear linkage lifting capacity (max.) | Kg | 3170 | | | | |
| Wheelbase | mm | 1650 | | | | |
| Overall rear width | mm | 1360 | 1460 | 1750 | 1460 | 1800 |
| Footprint | cm² | 10230 | 11880 | 13200 | 11880 | 14850 |
| Weight with ballast | Kg | 4760 | 4810 | 5250 | 4810 | 5370 |



3 cylinder FARMotion engine.





FRONT LOADERS

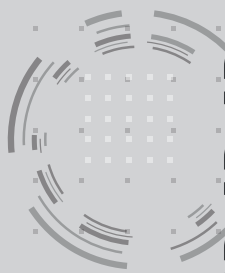
A wide range of loaders and attachments.



SAME's front loaders are designed specifically for the 70 to 140 hp range of tractors. As well as a solid, robust structure, they offer a wide selection of attachments for carrying out a full range of agricultural handling and storage tasks to perfection. With SAME front loaders the strain on the tractor is significantly reduced. Thanks to technical know-how the implement is in an ideal position to have less impact on the front axle. The loader is designed for maximum implement loading capacity and no trickle losses, with a maximum tilting angle, on the ground between 41° and 45°, raised up to 63°. Thanks to the Z-kinematics the driver profits from the best view and maximum performance. Moreover, he can drive smoothly even on bumpy terrain with the "Comfort-Drive" damping system that reduces the shocks on loader and implement. Mounting, dismounting and maintenance works are quick and easy jobs, as well as using the loader with all kinds of implements. With the unique "Return-to-Level" feature the implement returns to a predefined optimum position just at the touch of a button.

- Rugged and durable: Profiline Front Loaders made of fine grain steel.
- Mechanical level control system, Return-to-Level optional
- Maximum loading height up to 4,1 m
- The loader and its supports do not impede access to maintenance points
- Optional "HydroFix" quick coupling system for connecting the front loader and the relative connectors quickly and simply
- High lifting force over the entire lifting cycle
- Simple and high-precision control by means of joysticks or controls on a single lever
- The ComfortDrive function protects the operator and attachments from extreme vibrations





SDF SMART FARMING SOLUTIONS

READY FOR THE AGRICULTURE OF THE FUTURE.



Precision is the basic prerequisite for productivity.

SDF Smart Farming Solutions combines a large number of digital solutions for efficient and comfortable operation of tractors. These solutions include reliable and extremely precise auto-guidance systems, ISOBUS applications and a number of data management systems. The iMonitor is a simple to use centralised controller which plays a key role in the majority of these solutions and applications.

HIGHLIGHTS

- Increased productivity
- Easy to use
- Secure data
- Added convenience
- Unprecedented precision
- Advanced connectivity
- Superior compatibility
- Maximised profitability
- More efficient task management





Auto-guidance systems feature increasingly as standard equipment in the tractors used by many farms today, due to the evident advantages they offer: saving resources, increasing convenience and productivity as well as reliable precision. The operator can trust its high reliability even in difficult working conditions such as fog or night time. Anyone who has ever worked with a steering system will never want to be without it again. Many precision farming applications are based on satellite navigation. Our receivers use free, internationally available signals which offer different accuracy levels depending on the correction service and the receiver model. It is possible to choose the system that best suits the operation.



Efficient data management is becoming increasingly important to optimise work processes. No matter which type of data the customer want to work with, whether it's machine or agronomic data: SDF provides various applications for reliable transfer and insight of valuable data. Using standard file formats, customers can keep an overview at all times and data are transferred in a coordinated manner. This ensures maximum compatibility while our customers are always master of their decisions.



Optimise operations. Increase efficiency. The new SDF Fleet Management offers customised solutions to manage relevant machine data at a glance. Our customers like farmers, contractors or any other users benefit from full control of their machines by accessing various valuable data. The browser-based SDF Fleet Management application is the central interface to insight telemetry data for SAME machines. Machine data like fuel level, position or speed are transferred in real time into the application where users can monitor, analyse and optimise the use of their machinery. Error messages can be transmitted to dealer's service manager to prevent upcoming issues and decrease even machine downtime.



For reliable online data exchange between different endpoints, SAME provides an interface to the agrirouter. It is a universal data exchange platform that allows farmers and contractors to exchange data like field boundaries or guidelines between machinery and any agricultural software applications (e.g. an FMIS) from a wide range of manufacturers.



Electronics make agricultural machinery safer, more powerful, more precise and more efficient. ISOBUS connectivity lets the operator use multiple applications to control different implements individually from a single monitor. iMonitor is the central controller for all ISOBUS applications and can perform many different tasks intuitively and easily, such as assigning AUX-N functions, generating and handling application maps and automatically controlling up to 200 different sections. A great number of functions are even available without activation.

The technical data and images contained herein are indicative only. SAME reserves the right to modify its products at any time without prior notice. Code 308.8369.3.1-10 - 05/22



To find out more, visit same-tractors.com or contact your dealer.

follow us on   

SAME is a brand of  SDF