



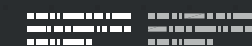
SAME

[PRODUCT RANGE]

2020

MODELS

[71]



08953 08953 08953 08953
15679 15679 15679 15679
96842 96842 96842 96842

08953 08953 08953 08953
15679 15679 15679 15679
96842 96842 96842 96842

08953 08953 08953 08953
15679 15679 15679 15679
96842 96842 96842 96842

[illegible]



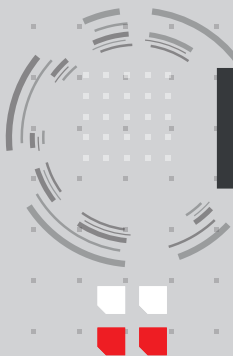
[model
RANGE]



The future belongs to those who forge it for themselves.

At the beginning, a dream begins as light and fragile as a seed, at the mercy of what happens around it. To make a dream take root and then bloom, it takes certain special qualities. It takes commitment, determination and vision. It takes brilliant ideas, strong hands that are not afraid to work and a heart filled with passion. It takes creativity, the will to learn, instinct and talent. And time, lots of time.

We know that you can identify with all of this, as have we, since 1927: the year in which Eugenio and Francesco Cassani decided that the time was right to plant the seed of their dream. This was the dawn of a new era in the relationship between man and machine: and their intention was for SAME (Società Accomandita Motori Endotermici) to be a key driving force in the development of Italian agricultural technology. And since then, generation after generation, one innovative idea at a time, this is exactly what SAME has done. Each new project draws from this rich heritage and the forward-looking DNA of SAME, which spurs us on in the continuous pursuit of more efficient engines, advanced mechanical solutions, digital farming management systems and superior comfort. Technological solutions conceived to answer the needs of tomorrow's farmer, by a company that has always chosen to forge its own future.



CONTENT

THESE ARE THE TWO MAIN TYPES OF TRACTOR
THE FIRST IS A STANDARD TRACTOR AND THE SECOND
IS A SPECIALISED TRACTOR. THE FIRST IS A
STANDARD TRACTOR AND THE SECOND IS A
SPECIALISED TRACTOR.



THESE ARE THE TWO MAIN TYPES OF TRACTOR
THE FIRST IS A STANDARD TRACTOR AND THE SECOND
IS A SPECIALISED TRACTOR. THE FIRST IS A
STANDARD TRACTOR AND THE SECOND IS A
SPECIALISED TRACTOR.

[120
PTO
CVT]



PRODUCTS

[6]

Open Field

[8]

Open Field & Utility

[14]

Mini

[15]

Specialised

[20]

Specialised CVT

[22]

Specialised technology

[25]

Crawlers



VIRTUS

OPEN FIELD



A range of tractors to help think big
about the development of each individual farm.

The Virtus range offers powerful, high performance and high-tech models. These products merge the brand's historic reliability with absolutely cutting-edge technology to offer tractors that are perfectly suited for modern agriculture. The family comes with numerous new technical features, starting with the modern FARMotion Stage IV engine, whose elevated performance goes hand in hand with reduced fuel consumption. But that's not all: The high-flow hydraulic system, the extremely comfortable cab, the numerous configurations and a large variety of accessories make this range highly versatile and able to respond to any requirements, even those that are more specific. What's more, to guarantee greater productivity, the Virtus family can be configured with Agrosky satellite guided automatic driving and can be prepared for a front loader (Light or Ready kit). The core of the second generation Virtus range is the FARMotion 4-cylinder engine, specifically designed for agricultural use and compliant with

Stage IV thanks to an SCR combined with an external EGR. An entirely new feature is the HEB (Hydraulic Engine Brake), a device which, during braking, activates the tractor's hydraulic circuit and the electronic visco fan, to help the vehicle brake without overloading the braking system. The transmission, available with up to 60+60 speeds with the addition of the supercreeper gear, also includes the acclaimed Stop&Go function, the ComfortClutch button-operated clutch and three Powershift ratios. The hydraulic system offers several configurations, starting from an open-centre with a 90 L/min pump, which feeds up to 8-way rear mechanical engagement distribution, all the way to the closed-centre version with a 120 L/min Load Sensing pump, that can be paired with 8-way mechanical engagement distribution or up to 10-way electronic engagement distribution. The optional SDD function doubles the steering speed, simplifying manoeuvres at



VIRTUS		120	130	140
Engine		FARMotion	FARMotion	FARMotion
Emissions compliance		Stage IV	Stage IV	Stage IV
Cylinders/capacity	No./cc	4/3849	4/3849	4/3849
Maximum power (ECE R120)	kW/HP	85/116	93/126	100/136
Power at rated engine speed (ECE R120)	kW/HP	80.6/110	88.2/120	94.9/129
Maximum rear lifting capacity	kg	7000	7000	7000
Wheelbase	mm	2540	2550	2550
Weight	kg	5300	5600	5600

low speeds. The electronic rear hitch has a maximum lifting capacity of 5,000 kg, which can be increased to 7,000 kg by using the additional rams (as standard only on the Virtus 140). Several configurations for the PTO as well, available in 4 speeds (540/540ECO/1000/1000ECO), besides the ground speed PTO with independent shaft. A further option is to have a front PTO, paired with a 2,880 kg front lift. Safety is fundamental, which is why the Virtus family features a full brake system with multiple wet disc brakes, HPB (Hydraulic Parking Brake) and PowerBrake, standard. Either hydraulic or pneumatic trailer brake lines compliant with the latest safety laws can be installed on SAME Virtus tractors, upon request. Options include front suspension and cab suspension.

Simple primary controls, total all-round visibility and premium comfort are traditional traits in all SAME tractors, and have been taken to the next level in the Virtus family.

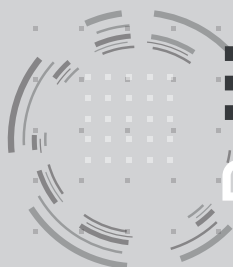


Ergonomic driver's seat.



InfoCentre^{Pro} with digital colour display.





EXPLORER

OPEN FIELD AND UTILITY



Extraordinary flexibility to adapt to any working conditions:
Explorer tractors offer not only class-beating performance, but also
unrivalled versatility in the field.

The Explorer tractor family lets you choose exactly the right configuration and version you need. The imposing dimensions of Explorer HD models and the outstanding weight/power ratio of Explorer MD and LD tractors are perfectly tailored for working in a wide spectrum of draft force conditions while minimising soil compaction. The Explorer range offers a huge choice of models and versions. LD, 2 compact, easy to use models ideal for farm tasks and secondary tillage usage. MD, 4 models with significantly sturdier constructions and intended predominantly for farm tasks. HD, 2 models for the toughest open field work.

All products from the Explorer family are fitted with FARMotion turbo intercooled 3 or 4-cylinder engines. There are a wide variety of transmission

configurations, mechanical, Hi-Lo or 3 Powershift speeds, to allow the driver to maintain the ideal speed. The option of a hydraulic reverse shuttle with integrated response setting control, the Stop&Go function and hydraulic system with a delivery rate of 60 l/min at lower engine speed (60ECO) or 90 l/min "on demand" makes Explorer tractors extremely effective when hitching implements and working with the front loader. Explorer tractors are a pleasure to drive in the field and the mechanical or electronic rear hitch is easy to use, maximising productivity at all times.

Many of the implements used to prepare the soil for sowing have very high PTO power demands, calling for an engine capable of delivering plenty of performance in all conditions.



EXPLORER		LD		MD				HD	
		80	90	90	90.4	100	110	110	120
Engine		FARMotion	FARMotion	FARMotion	FARMotion	FARMotion	FARMotion	FARMotion	FARMotion
Emissions compliance		Stage III B	Stage III B	Stage III B	Stage III B	Stage III B	Stage III B	Stage IV	Stage IV
Cylinders/capacity	No./cc	3/2887	3/2887	3/2887	4/3849	4/3849	4/3849	4/3849	4/3849
Maximum power (ECE R120)	kW/HP	55.4/75	65/88	65/88	65/88	75/102	83/113	78/106	85/116
Power at rated engine speed (ECE R120)	kW/HP	55.4/75	61.7/84	61.7/84	61.7/84	71.5/97	79/109	74/101	80.6/110
Maximum rear lifting capacity	kg	4525	4525	4525	4525	4525	4525	4855	5410
Wheelbase (4WD/2WD)	mm	2300/-	2300/2255	2350/-	2400/-	2400/2360	2400/-	2400/-	2400/-
Weight	kg	3600	3600	3750	3900	3900	3900	4220	4,320

Offered with the choice of a 4-speed PTO, a ground speed PTO synchronised with the transmission and with an independent output shaft, and a 1,000 rpm front PTO, to provide the ideal power solution for any PTO driven implement, Explorer tractors are multi-role machines capable of catering for a wide range of applications.

Explorer tractors combine unparalleled flexibility with superior productivity to offer the ideal answer to the needs of the agricultural professional. The functional and comfortable cab offers the driver a pleasant working environment. Every product in the Explorer family can be made loader ready (Light or Ready kit) straight from the factory.

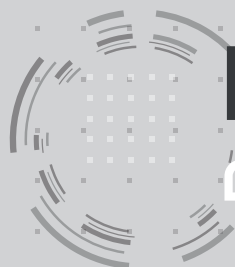


Ergonomic driver area and new passenger seat.



Electro-hydraulic controls for the main functions.





DORADO

OPEN FIELD & UTILITY



With the Dorado, SAME has re-interpreted one of its most successful products with a modern, updated twist.

Created to provide the ideal answer for working in the open field and for general farm tasks, the SAME Dorado family offers an impressive variety of configurations, superior comfort and modern features to take on any job with ease: from the smallest in the range, which is perfect for general farm tasks - even in confined spaces - to the most powerful, designed for heavier duty jobs which need more PTO power. Featuring a new design, the latest generation of FARMotion engines and 3 Powershift ratios, Dorado tractors are ready to take on the agricultural challenges of tomorrow.

OPEN FIELD AND UTILITY

DORADO		80	90	90.4	100.4
Engine		FARMotion	FARMotion	FARMotion	FARMotion
Emissions compliance		Stage III B	Stage III B	Stage III B	Stage III B
Cylinders/capacity	No./cc	3/2887	3/2887	4/3849	4/3849
Maximum power (ECE R120)	kW/HP	55.4/75	65/88	65/88	75/102
Power at rated engine speed (ECE R120)	kW/HP	55.4/75	61.6/84	61.6/84	71.5/97
Maximum rear lifting capacity	kg	3600	3600	3600	3600
Wheelbase (4WD/2WD)	mm	2100/2140	2100/2140	2230/2270	2230/2270
Weight	kg	3200	3200	3300	3300



Unparalleled functionality and comfort.



DORADO CLASSIC

OPEN FIELD & UTILITY



Agility, flexibility, quality:
 Dorado Classic is a loyal ally in the field, day after day.

Rapid manoeuvrability, quick direction inversions and minimised soil compaction are key factors for efficient time management and ensuring the highest possible product quality. Boasting an impressive power to weight ratio, Dorado Classic tractors cater to every possible situation. The power of these tractors comes from the Stage III B 3 or 4-cylinder FARMotion engines; all have generous torque reserves and superb flexibility to respond to sudden increases in load even at low engine speeds.

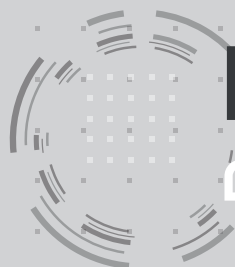
OPEN FIELD AND UTILITY

DORADO Classic (MY 2020)		70 Classic	80 Classic	90 Classic	90.4 Classic
Engine		FARMotion	FARMotion	FARMotion	FARMotion
Emissions compliance		Stage III B	Stage III B	Stage III B	Stage III B
Cylinders/capacity	No./cc	3/2887	3/2887	3/2887	4/3849
Maximum power (ECE R120)	kW/HP	48/65	55.4/75	65/88	65/88
Power at rated engine speed (ECE R120)	kW/HP	48/65	55.4/75	61.6/84	61.6/84
Maximum rear lifting capacity	kg	3600	3600	3600	3600
Wheelbase (4WD/2WD)	mm	2100/2140	2100/2140	2100/2140	2230/2270
Weight	kg	3200	3200	3200	3300



New bonnet design.





DORADO NATURAL

OPEN FIELD & UTILITY



A range of versatile, compact tractors.

Created to meet the need for working in the open field and company applications, the SAME Dorado Natural tractors with the new FARMotion engines adapt to any work environment and offer practical technical features, a superior level of comfort and a large variety of versions, making it the perfect card for winning every game. The new transmissions make it possible to always have the correct pace in the field and drive on the road at 40 km/h with the engine at an economic speed; the new cab offers a large, comfortable and ergonomic work environment.

DORADO Natural		70	80	90	100
Engine		FARMotion	FARMotion	FARMotion	FARMotion
Emissions compliance		Stage III B	Stage III B	Stage III B	Stage III B
Cylinders/capacity	No./cc	3/2887	3/2887	3/2887	3/2887
Maximum power (ECE R120)	kW/HP	48/65	55.4/75	65/88	71/97
Power at rated engine speed (ECE R120)	kW/HP	48/65	55.4/75	61.6/84	67.3/92
Maximum rear hitch lifting capacity	kg	3500	3500	3500	3500
Wheelbase	mm	2100	2100	2100	2230
Weight	kg	3200	3200	3200	3200

OPEN FIELD AND UTILITY



New spacious and ergonomic cab.



ARGON

OPEN FIELD & UTILITY



The ideal all-rounder.

The Argon range is distinguished by its excellent handling, considerable robustness and extreme simplicity and easy of use, all of which are further enhanced by the all new FARMotion engines, which were designed specifically for agricultural use. The Argon range offers various transmission options. Versions with 12 forward speeds and 3 reverse speeds (with supercreeper gear) and with 8+8 ECO speeds (with mechanical reverse shuttle) have a top speed of 30 km/h, while 15+15 speed (or 15+15 ECO) versions are capable of road speeds up to 40 km/h. The latter version offers the electrohydraulic engagement of front wheel drive and of the front and rear differentials as standard equipment. The rear PTO comes as standard with 540 rpm and 540 ECO speed modes, while 1000 rpm or Syncro modes may be added as an option. The hydraulic system offers a flow rate of up to 50 l/min and is configurable with up to 6 rear ways, while the lift has a maximum capacity of 3500 kg. The driver area offers superior comfort, with a lower profile centre tunnel, the new instrument cluster and the new controls, which are even more comfortable and easy to use.

ARGON		70	80	90	100
Engine		FARMotion	FARMotion	FARMotion	FARMotion
Emissions compliance		Stage III B	Stage III B	Stage III B	Stage III B
Cylinders/capacity	No./cc	3/2887	3/2887	3/2887	3/2887
Maximum power (ECE R120)	kW/HP	48/65	55.4/75	65/88	71/97
Power at rated engine speed (ECE R120)	kW/HP	48/65	55.4/75	61.6/84	67.3/92
Maximum rear hitch lifting capacity	kg	3500	3500	3500	3500
Wheelbase (4WD/2WD)	mm	2100/2166	2100/2166	2100/-	2100/-
Weight (4WD/2WD)	kg	3000/2800	3000/2800	3000/-	3000/-

OPEN FIELD AND UTILITY



FARMotion Stage III B 3-cylinder engines:



SOLARIS

MINI

The most compact member of the SAME family, with a design accentuating its extraordinary compactness and practicality.

Solaris is the definitive compact tractor. With its potent engines, efficient transmissions and an extensive choice of accessories, it is as capable as a bigger, more expensive tractor. Its compact dimensions ensure agile manoeuvrability, making the Solaris range the ideal choice for both field tasks and for usage in cramped spaces, such as in greenhouses, nurseries, fruit orchards and small farms.

SOLARIS		35	45	55
Engine		mitsubishi	mitsubishi	mitsubishi
Emissions compliance		Stage III A	Stage III A	Stage III A
Cylinders/capacity	No./cc	4/1500	4/1500	4/1758
Maximum power (ECE R120)	kW/HP	28.5/39	31.5/43	37/51
Power at rated engine speed (ECE R120)	kW/HP	28.5/39	31.5/43	37/51
Maximum rear lifting capacity	kg	1200	1200	1200
Wheelbase	mm	1745	1745	1745
Weight with ROPS (min-max)	kg	1130-1340	1207-1380	1267-1440
Weight with cab (min-max)	kg	1410-1620	1487-1660	1547-1720

MINI



Cab version and air conditioning also available.



EXPLORER TB

SPECIALISED



Unique tractors dedicated to the specialist farmer.

These extremely versatile, practical and potent multirole machines are ready to take on even the toughest job. Available as two versions - 105 and 115 - Explorer TB models, are designed for the farmer with specific requirements. The unbeatable choice for olive groves, widely spaced fruit orchards, greenhouses and mountain terrain with its limited overall height, low centre of gravity and sturdy construction intended for working with heavy duty implements. FARMotion 4-cylinder turbo and intercooled engines enable the machine to respond quickly, in all conditions.



Hydraulic reverse shuttle with Stop&Go.

EXPLORER TB		105	115
Engine		FARMotion	FARMotion
Emissions compliance		Stage III B	Stage III B
Cylinders/capacity	No./cc	4/3849	4/3849
Maximum power (ECE R120)	kW/HP	75/102	83/113
Power at rated engine speed (ECE R120)	kW/HP	71.5/97	79/107
Maximum rear hitch lifting capacity	kg	4525	4525
Wheelbase	mm	2400	2400
Weight	kg	3300	3500

SPECIALISED



FRUTTETO NATURAL

SPECIALISED

The perfect combination of simplicity and specialised capability .

With a comprehensive specification choice, for working effectively with any implement on the farm, these are truly multi-purpose machines, responding perfectly to the need for practicality and simplicity typical of a specialised operation while capable of operating as an effective utility tractor for a small farm. While capable of class beating performance in all conditions, these machines are so simple that even a novice operator can work productively and effectively. These tractors are competitively priced, to ensure a rapid return on your investment. Frutteto Natural is a tireless worker with incredible agility and manoeuvrability.

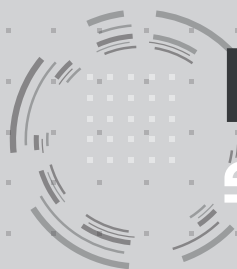
FRUTTETO Natural		70	80	80.4
Engine		FARMotion	FARMotion	FARMotion
Emissions compliance		Stage III B	Stage III B	Stage III B
Cylinders/capacity	No./cc	3/2887	3/2887	4/3849
Maximum power (ECE R120)	kW/HP	48/65	55.4/75	55.4/75
Maximum rear lifting capacity (STANDARD/COMPACT)	kg	3050/2700	3050/2700	3050/2700
Wheelbase	mm	1996	1996	2126
Minimum width	mm	1466	1466	1466
Weight	kg	2500	2500	2650

SPECIALISED



Rear hitch available in two versions.





FRUTTETO CLASSIC

SPECIALISED



The perfect combination of versatility and comfort.

With its compact size, robustness and manoeuvrability, the SAME Frutteto Classic is ideal for specialised farming applications.

3 or 4-cylinder Stage III B FARMotion engines are high performing but provide lower fuel consumption. With a folding roll bar and an impressive steering angle, these tractors are agile enough to work with complete ease and in total safety in any situation.

The sturdy structure of Frutteto Classic tractors also makes them the ideal choice for open field work.

FRUTTETO Classic		80	80.4	90	90.4	100	105
Engine		FARMotion	FARMotion	FARMotion	FARMotion	FARMotion	FARMotion
Emissions compliance		Stage III B	Stage III B	Stage III B	Stage III B	Stage III B	Stage III B
Cylinders/capacity	No./cc	3/2887	4/3849	3/2887	4/3849	3/2887	4/3849
Maximum power (ECE R120)	kW/HP	55.4/75	55.4/75	65/88	65/88	71/97	75/102
Maximum rear hitch lifting capacity	kg	2600	2800	2600	2800	2600	2800
Wheelbase	mm	2011	2141	2011	2141	2011	2141
Minimum width	mm	1466	1450	1597	1584	1597	1624
Max. weight with ROPS	kg	2620	2770	2620	2770	2630	2770

SPECIALISED



Transmission controls with side handles.



FRUTTETO

SPECIALISED

A family of tractors that's perfectly at home between narrow rows.

SAME Frutteto is the perfect tool for maximising productivity in the fruit orchard and vineyard. Frutteto Stage III B models are powered by the advanced FARMotion engines developed and produced by SDF. Compliance with current Stage III B emissions regulations is ensured by an EGR exhaust gas recirculation system combined with a DOC catalytic converter - both of which maintenance-free. A tractor that understands and answers the needs of today's farmer. This family of tractors offers a wide choice of configurations, with a cab or platform, mechanical or electro-hydraulic controls, a range of different tyre diameters and an extensive selection of hydraulic configurations. Compact dimensions, an incredibly tight turning circle and outstanding manoeuvrability make the Frutteto the ideal tractor for working in even the most restricted spaces and with very limited headland.

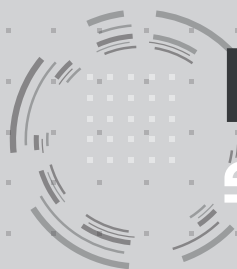
FRUTTETO		80	90	90.4	100	105	115
Engine		FARMotion	FARMotion	FARMotion	FARMotion	FARMotion	FARMotion
Emissions compliance		Stage III B	Stage III B	Stage III B	Stage III B	Stage III B	Stage III B
Cylinders/capacity	No./cc	3/2887	3/2887	4/3849	3/2887	4/3849	4/3849
Maximum power (ECE R120)	kW/HP	55.4/75	65/88	65/88	71/97	75/102	83/113
Maximum rear hitch lifting capacity	kg	2800	2800	2800	2800	2800	2800
Wheelbase	mm	2011	2011	2141	2011	2141	2141
Minimum width	mm	1454	1454	1454	1454	1454	1454
Weight with cab	kg	2950	2950	3100	2950	3100	3100

SPECIALISED



Incomparable comfort, a winning style.





FRUTTETO S/V

SPECIALISED



Small and agile when needed, but also powerful enough for any task.

The new Frutteto S/V are fitted with 3 or 4-cylinder Stage III B FARMotion engines, with state of the art performance and reduced consumption. With a choice of cab or platform, a range of different tyres and mechanical and hydraulic technology, combined with compact dimensions and impressive power, Frutteto S/V tractors are the ideal solution for the specialised tasks typical of the vineyard and fruit orchard, where unique capabilities are a must. Boasting generous steering angles, superlative agility and structural and technological solutions tailored to maximise compactness, the main mission of Frutteto S/V tractors is to cater for the needs of today's farmers. Efficiency, manoeuvrability and comfort are the key strengths of the Frutteto S/V, the product of a long tradition in the field and the commitment to continuously develop and introduce significant technological innovations.

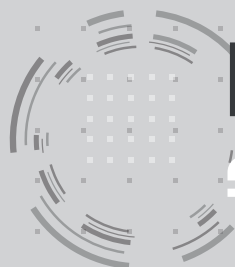
SPECIALISED

FRUTTETO S/V		80	90	90.4	100	105	115
Engine		FARMotion	FARMotion	FARMotion	FARMotion	FARMotion	FARMotion
Emissions compliance		Stage III B	Stage III B	Stage III B	Stage III B	Stage III B	Stage III B
Cylinders/capacity	No./cc	3/2887	3/2887	4/3849	3/2887	4/3849	4/3849
Maximum power (ECE R120)	kWHP	55.4/75	65/88	65/88	71/97	75/102	83/113
Maximum rear hitch lifting capacity	kg	2600	2600	2600	2600	2600	2600
Wheelbase	mm	2050	2050	2180	2050	2180	2180
Minimum width for S version	mm	1264	1264	1264	1264	1264	1264
Minimum width for V version	mm	1163	1163	1163	1163	1163	1163
Weight with cab	kg	2750	2750	2900	2750	2900	2900



Hi-Steer version, with extraordinary manoeuvrability and comfort.





FRUTTETO CVT

SPECIALISED CVT



The most special specialist there is.

Perfectly at home in any conditions, the SAME Fruitteto CVT is a tough, specialised tractor that is compact and yet extraordinarily sure-footed. It embodies the state of the art in specialised tractor technology, as demonstrated by its efficient FARMotion engines, innovative continuously variable transmission, flat-floored cab boasting the new MaxCom armrest, and a highly modular hydraulic system equipped with an 84 l/min fixed displacement pump or a 100 l/min Load Sensing pump. Technological solutions that up until now had only been seen on open field tractors.

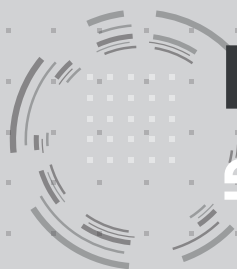
FRUTTETO CVT		90	100	90.4	105	115
Engine		FARMotion	FARMotion	FARMotion	FARMotion	FARMotion
Emissions compliance		Stage III B	Stage III B	Stage III B	Stage III B	Stage III B
Cylinders/capacity	No./cc	3/2887	3/2887	4/3849	4/3849	4/3849
Maximum power (ECE R120)	kW/HP	65/88	71/97	65/88	75/102	83/113
Maximum rear hitch lifting capacity	kg	3800	3800	3800	3800	3800
Wheelbase	mm	2044	2044	2174	2174	2174
Minimum width	mm	1538	1538	1538	1538	1538
Weight with cab (min-max)	kg	3187-3780	3187-3780	3415-4008	3415-4008	3415-4008

SPECIALISED CVT



Electronically controlled hydraulic distributors.





FRUTTETO CVT S/V

SPECIALISED CVT



The specialist for excellence in vineyards and orchards.

Three different SAME Frutteto CVT versions to pick from! In addition to Frutteto CVT variants, with their proven capabilities in widely spaced fruit orchards (and are also unbeatable all-rounders in open field applications), in keeping with SAME tradition, S and V variants are also offered, with axles specifically configured for working more effectively between very narrowly spaced rows. Exceptional comfort, a wide range of configuration possibilities and advanced technology never seen before in the sector of specialised tractors. The technological superiority of the Frutteto CVT is demonstrated by the extensive choice of configurations available, and features such as the new MaxCom armrest, the innovative continuously variable transmission, comfortable new cabs, hydraulic systems equipped with a Load Sensing pump capable of delivering a flow rate of 100 l/min at an engine speed of just 1850 rpm and modern 3 or 4 cylinder FARMotion engines developed specifically for agricultural applications.

SPECIALISED CVT

FRUTTETO CVT S/V		90	100	90.4	105	115
Engine		FARMotion	FARMotion	FARMotion	FARMotion	FARMotion
Emissions compliance		Stage III B	Stage III B	Stage III B	Stage III B	Stage III B
Cylinders/capacity	No./cc	3/2887	3/2887	4/3849	4/3849	4/3849
Maximum power (ECE R120)	kW/HP	65/88	71/97	65/88	75/102	83/113
Maximum lifting capacity	kg	2600	2600	2600	2600	2600
Wheelbase	mm	2086	2086	2216	2216	2216
Minimum width for S version	mm	1267	1267	1267	1267	1267
Minimum width for V version	mm	1077	1077	1077	1077	1077
Weight with cab, S version (min-max)	kg	3165-3768	3165-3768	3218-3821	3218-3821	3218-3821
Weight with cab, V version (min-max)	kg	3081-3590	3081-3590	3145-3643	3145-3643	3145-3643



Cab with flat floor and exclusive MaxCom armrest.



HIGH-FLOW, POWER-FLOW, SETTING-FLOW

SPECIALISED TECHNOLOGY

An innovative 3 level hydraulic system with a flow rate up to 131 l/min.

HIGH-FLOW



Right hand side:

- 8 couplers (with flow regulator) managed from an electronic joystick offering precise control over the simultaneous movements of low flow rate implements.
- 2 electric power sockets.

Left hand side:

- 4 high flow rate couplers, controlled with electro-proportional thumb-wheels, with settable time and flow (indicated on the digital display of the instrument panel), and with detent, float and kick-out functions.
- 2 free return lines.

POWER-FLOW



Right hand side:

- Power Beyond.
- 1 free return line.
- 2 electric power sockets.

Left hand side:

- 4 high flow rate couplers, controlled with an electro-proportional joystick, with settable time and flow (indicated on the digital display of the instrument panel), and with detent, float and kick-out functions.
- 2 free return lines.

SETTING-FLOW



Right hand side:

- 8 couplers (with flow regulator) managed from an electronic joystick offering precise control over the simultaneous movements of low flow rate implements.
- 2 electric power sockets.

Left hand side:

- 1 coupler (medium flow rate, with flow regulator).
- 1 free return line.

		Setting-Flow	Power-Flow	High-Flow
1 Tandem pump (transmission)	l/min	64	-	-
2 Tandem pumps (transmission + engine)	l/min	-	131 (64+67)	131 (64+67)
Single pump (steering wheel)	l/min	45	45	45
Number of front ways (right)	No.	8 (adjustment)	1 (Power Beyond)	8 (adjustment)
Number of front ways (left)	No.	1	4 (high flow rate)	4 (high flow rate)
Power sockets	No.	2	2	2
Electronic Joystick		▲	▲	▲
Mechanical flow regulator, front ways (right)		▲	▲	▲
Mechanical flow regulator, front ways (left)		▲	-	-
Electronic flow regulator, front ways (left)		-	▲	▲
Float function (ways)	No.	4	4	8

ACTIVEDRIVE

SPECIALISED TECHNOLOGY

ActiveDrive independent wheel front suspension:
an exclusive result of SAME experience in specialised applications.

The independent front arm suspension is the result of SAME's leading experience in specialised technology. This exclusive innovative solution means that on Frutteto and Frutteto CVT ActiveDrive tractors, each front wheel can move up and down completely independently of the other. SAME has achieved this without compromising the overall compactness of the machine and while actually lowering the centre of gravity of the tractor, improving weight distribution and, as a result, offering even more impressive stability and safety. This truly formidable package of advanced features allows SAME to offer levels of driver comfort and stability which, until now, had been the sole domain of high-power tractors.

Anti-dive and Anti-roll functions. Superlative stability, safety and grip.

With innovative suspension geometry and exclusive control software, Frutteto and Frutteto CVT ActiveDrive tractors also offer Anti-dive and Anti-roll functions. Anti-dive improves braking stability and safety by countering sudden front suspension compression and the subsequent shift in load towards the front axle, while Anti-roll automatically adjusts the stiffness of the system in relation to steering angle and ground speed to maximise stability and grip both in the field and on the road.

Superior comfort, whatever the terrain.

Managed by an adaptive electrohydraulic system, the **ActiveDrive** suspension works in synergy with the DTC electronically controlled differential to offer levels of driving comfort unattainable by any other specialised tractor. The permanently active self-levelling function keeps the cylinders as close to their mid-stroke positions as possible, maximising available suspension travel in all operating conditions. Completing the capabilities of the system, the DTC - the innovative differential with an automatic, progressively engaged differential locking system - is capable of locking by up to 100% to prevent the front wheels from slipping and ensure constant traction in varying grip conditions.

ACTIVESTEER

SPECIALISED TECHNOLOGY

SAME Frutteto CVT stands out from the crowd with ActiveSteer technology.

Confirming its technological leadership in the specialised tractor market, SAME brings innovative ActiveSteer technology to its Frutteto CVT tractor, a solution that not only offers an astonishing improvement in agility and manoeuvrability, but also takes the versatility of this tractor conceived for the fruit orchard and vineyard to new heights. The Frutteto CVT ActiveSteer is the first specialised tractor with 4-wheel steering with the same track and wheelbase measurements as conventional versions.

In addition to improving manoeuvrability, ActiveSteer technology also ensures greater operating safety in comparison to tractors with a central joint as well as models with a highly advanced front axle: the first type in fact moves the machine's centre of gravity when steering, while the second type inevitably has a larger wheelbase.

The position of the rear wheels is controlled by an electronic control unit that is programmed to automatically select and manage different operating modes:

- with movements proportional to the front wheels, a solution which drastically reduces the turning radius without penalising machine stability;
- "crab" mode, with all 4 wheels steering in the same direction - this mode is useful, for example, for contour ploughing (along contour lines), and may also be used to reduce the space needed to manoeuvre when working with a loader, and to manoeuvre diagonally to avoid obstacles.
- "delayed" mode, with the rear wheels also steered proportionally with the front wheels, but after a slight time delay - this mode is useful when towing trailers, to prevent the trailer from pivoting and following a tighter angle than the tractor.

In addition to these automated control modes, the steering angle of the rear wheels can be adjusted manually to compensate for downhill slippage of the rear axle on very steep gradients, and the rear wheels can also be locked when necessary or for driving on the road



KRYPTON F

CRAWLERS



Tough, versatile and safe: a master of its own world.

The Krypton F was conceived to work in the vineyard. Krypton F models may be equipped with ComfortTrack rubber track chains, which reduce vibration and noise to maximise driver comfort and reduce damage caused by soil compaction. Krypton F tractors are incredibly versatile, and feature two duplicated hydraulic couplers at the front right of the machine for attaching side and front-mounted implements simply and easily - an extremely useful feature when working with pruner attachments, side shoot removers and post drivers.

KRYPTON F		90			100	
		C	N	L	N	L
Engine		FARMotion	FARMotion	FARMotion	FARMotion	FARMotion
Emissions compliance		Stage III B	Stage III B	Stage III B	Stage III B	Stage III B
Cylinders/capacity	No./cc	3/2887	3/2887	3/2887	3/2887	3/2887
Maximum power (ECE R120)	kW/HP	65/88	65/88	71/97	71/97	71/97
Maximum rear hitch lifting capacity	kg	3170	3170	3170	3170	3170
Wheelbase	mm	1650	1650	1650	1650	1650
Width	mm	1360	1460	1750	1460	1800
Footprint area	cm ²	10230	11880	13200	11880	14850
Weight with ballast	kg	4760	4810	5250	4810	5370

CRAWLERS



3 cylinder FARMotion engine



KRYPTON M

CRAWLERS

The class-beating compact crawler for the open field.

With its extraordinary agility, low centre of gravity, 6-roller undercarriage and extensive ground contact surface area (with 450 mm wide track shoes), the new SAME Krypton M was conceived specifically for heavy duty work in the open field and on even the steepest gradients. A 50 l/min hydraulic system, numerous hydraulic couplers (with up to 10 rear couplers and 2 duplicated couplers at the front) and a 540/540ECO (or 540/1000) rear PTO make these tractors supremely versatile. Under the new bonnet is a 4 cylinder FARMotion engine with 2000 bar common rail fuel injection.

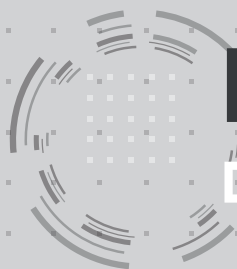


"Up to 10-way" rear hydraulic distributors.

KRYPTON M		105	115
Engine		FARMotion	FARMotion
Emissions compliance		Stage III B	Stage III B
Cylinders/capacity	No./cc	4/3849	4/3849
Maximum power (ECE R120)	kW/HP	75/102	83/113
Maximum rear hitch lifting capacity	kg	2800	2800
Wheelbase	mm	1850	1850
Width (min-max)	mm	1800	1800
Footprint area	cm ²	16650	16650
Weight with ballast	kg	5880	5880

CRAWLERS





KRYPTON

CRAWLERS

KRPT
[STAGE IIIB]



Go-anywhere capability in total safety.

The most powerful model in the family, the SAME Krypton crawler can tackle any terrain. Created to deliver unparalleled performance in the challenging conditions of hilly or mountainous terrain. With a modern design with soft, rounded forms conceived for excellent visibility and to minimise crop damage, the Krypton 115 has a wheelbase of 1850 mm and an innovative 6-roller undercarriage offering even greater stability and traction.



A comfortable, ergonomic driver area.

KRYPTON		115
Engine		FARMotion
Emissions compliance		Stage III B
Cylinders/capacity	No./cc	4/3849
Maximum power (ECE R120)	kW/HP	83/113
Maximum rear hitch lifting capacity	kg	3170
Wheelbase	mm	1850
Width (min-max)	mm	1800
Footprint area (min-max)	cm ²	16650
Weight with roll bar (min-max)	kg	6140

CRAWLERS



The technical data and images contained herein are indicative only. SAME reserves the right to modify its products at any time without prior notice.
Code 308.8369.3.1-8 - 10/19

Dealer area



To find out more, visit same-tractors.com
or talk to you dealer.



SAME is a brand of  SDF

